

## EFNS/MDS-ES recommendations for the diagnosis of Parkinson's disease

A. Berardelli<sup>a\*</sup>, G. K. Wenning<sup>b</sup>, A. Antonini<sup>c</sup>, D. Berg<sup>d</sup>, B. R. Bloem<sup>e</sup>, V. Bonifati<sup>f</sup>, D. Brooks<sup>g</sup>, D. J. Burn<sup>h</sup>, C. Colosimo<sup>i</sup>, A. Fanciulli<sup>b</sup>, J. Ferreira<sup>j</sup>, T. Gasser<sup>d</sup>, F. Grandas<sup>k</sup>, P. Kanovsky<sup>l</sup>, V. Kostic<sup>m</sup>, J. Kulisevsky<sup>n</sup>, W. Oertel<sup>o</sup>, W. Poewe<sup>b</sup>, J.-P. Reese<sup>p</sup>, M. Relja<sup>q</sup>, E. Ruzicka<sup>r</sup>, A. Schrag<sup>s</sup>, K. Seppi<sup>b</sup>, P. Taba<sup>t</sup> and M. Vidailhet<sup>u</sup>

<sup>a</sup>Dipartimento di Neurologia e Psichiatria and IRCCS NEUROMED Institute, Sapienza, Università di Roma, Rome, Italy; <sup>b</sup>Department of Neurology, Innsbruck Medical University, Innsbruck, Austria; <sup>c</sup>Parkinson's disease and Movement Disorders Unit IRCCS, San Camillo, Venice, Milan, Italy; <sup>d</sup>Department of Neurodegenerative Diseases, Hertie-Institute for Clinical Brain Research, German Center for Neurodegenerative Diseases, University of Tübingen and DZNE, Tübingen, Germany; <sup>e</sup>Donders Institute for Brain, Cognition and Behaviour, Department of Neurology, Radboud University Nijmegen Medical Center, Nijmegen; <sup>f</sup>Department of Clinical Genetics, Erasmus MC, Rotterdam, The Netherlands; <sup>g</sup>Department of Clinical Neuroscience, Imperial College London, Hammersmith Hospital, London, UK; <sup>h</sup>Institute for Ageing and Health, Newcastle University, Newcastle upon Tyne, UK; <sup>i</sup>Dipartimento di Neurologia e Psichiatria, Sapienza, Università di Roma, Rome, Italy; <sup>j</sup>Centro De Estudos Egas Moniz, Faculdade De Medicina De Lisboa, Lisbon, Portugal; <sup>k</sup>Movement Disorders Research Unit, Hospital Universitario Gregorio Marañón, Madrid, Spain; <sup>l</sup>Department of Neurology, Palacky University, Olomouc, Czech Republic; <sup>m</sup>Institute of Neurology CCS, School of Medicine, University of Belgrade, Belgrade, Serbia; <sup>n</sup>Movement Disorders Unit, Department of Neurology, Sant Pau Hospital, Universitat Autònoma de Barcelona and Cibernet, Barcelona, Spain; <sup>o</sup>Department of Neurology, Centre of Nervous Diseases, Philipps-University of Marburg, Marburg, Germany; <sup>p</sup>Institut für Medizinische Soziologie, Deutschland, Germany; <sup>q</sup>Department of Neurology, Movement Disorders Centre, School of Medicine and University Hospital Centre, University of Zagreb, Zagreb, Croatia; <sup>r</sup>Ist Faculty of Medicine and General University Hospital in Prague, Charles University in Prague, Praha, Czech Republic; <sup>s</sup>Institute of Neurology, University College London, London, UK; <sup>t</sup>Department of Neurology and Neurosurgery, University of Tartu, Tartu, Estonia; and <sup>u</sup>Pôle des Maladies du Système Nerveux et CRICM UPMC/INSERM UMR\_S975 CNRS UMR7225, Fédération de Neurologie, Hôpital de la Salpêtrière, Paris, France

### Keywords:

movement disorders,  
neurological disorders,  
Parkinson's disease

Received 18 July 2012

Accepted 18 September 2012

**Background:** A Task Force was convened by the EFNS/MDS-ES Scientist Panel on Parkinson's disease (PD) and other movement disorders to systemically review relevant publications on the diagnosis of PD.

**Methods:** Following the EFNS instruction for the preparation of neurological diagnostic guidelines, recommendation levels have been generated for diagnostic criteria and investigations.

**Results:** For the clinical diagnosis, we recommend the use of the Queen Square Brain Bank criteria (Level B). Genetic testing for specific mutations is recommended on an individual basis (Level B), taking into account specific features (i.e. family history and age of onset). We recommend olfactory testing to differentiate PD from other parkinsonian disorders including recessive forms (Level A). Screening for pre-motor PD with olfactory testing requires additional tests due to limited specificity. Drug challenge tests are not recommended for the diagnosis in de novo parkinsonian patients. There is an insufficient evidence to support their role in the differential diagnosis between PD and other parkinsonian syndromes. We recommend an assessment of cognition and a screening for REM sleep behaviour disorder, psychotic manifestations and severe depression in the initial evaluation of suspected PD cases (Level A). Transcranial sonography is recommended for the differentiation of PD from atypical and secondary parkinsonian disorders (Level A), for the early diagnosis of PD and in the detection of subjects at risk for PD (Level A), although the technique is so far not universally used and requires some expertise. Because

Correspondence: A. Berardelli, Dipartimento di Neurologia e Psichiatria, Sapienza, Università di Roma, Viale dell'Università 30, 00185 Rome, Italy (tel./fax: +390649914700; e-mail: alfredo.berardelli@uniroma1.it).

This is a Continuing Medical Education article, and can be found with corresponding questions on the Internet at <http://www.efns.org/EFNS-Continuing-Medical-Education-online.301.0.html>. Certificates for correctly answering the questions will be issued by the EFNS.

specificity of TCS for the development of PD is limited, TCS should be used in conjunction with other screening tests. Conventional magnetic resonance imaging and diffusion-weighted imaging at 1.5 T are recommended as neuroimaging tools that can support a diagnosis of multiple system atrophy (MSA) or progressive supranuclear palsy versus PD on the basis of regional atrophy and signal change as well as diffusivity patterns (Level A). DaTscan SPECT is registered in Europe and the United States for the differential diagnosis between degenerative parkinsonisms and essential tremor (Level A). More specifically, DaTscan is indicated in the presence of significant diagnostic uncertainty such as parkinsonism associated with neuroleptic exposure and atypical tremor manifestations such as isolated unilateral postural tremor. Studies of [ $^{123}\text{I}$ ]MIBG/SPECT cardiac uptake may be used to identify patients with PD versus controls and MSA patients (Level A). All other SPECT imaging studies do not fulfil registration standards and cannot be recommended for routine clinical use. At the moment, no conclusion can be drawn as to diagnostic efficacy of autonomic function tests, neurophysiological tests and positron emission tomography imaging in PD.

**Conclusions:** The diagnosis of PD is still largely based on the correct identification of its clinical features. Selected investigations (genetic, olfactory, and neuroimaging studies) have an ancillary role in confirming the diagnosis, and some of them could be possibly used in the near future to identify subjects in a pre-symptomatic phase of the disease.

## Introduction

A correct diagnosis of Parkinson's disease (PD) is a prerequisite for patient counselling and therapeutic management. Despite all the recent advances in imaging and genetics of parkinsonian disorders, the diagnosis of PD remains a primarily clinical exercise. However, clinical diagnostic uncertainty is high at initial presentation, and up to 10–30% of patients initially diagnosed as PD are clinically re-classified even in specialized units [1]. Targeting this pitfall, numerous ancillary investigations have been developed in the last decades to support PD diagnostic work-up [2]. Because these tests differ in their differential diagnostic performance, availability and costs, the EFNS/MDS-ES Task Force identified a clear need to develop guidelines for the diagnosis of PD to be applied across Europe. This need is fostered by recent efforts of the PD research community focusing on the development of screening tools capable of identifying individuals *at risk* for PD.

This EFNS/MDS-ES Task Force report is divided into nine sections addressing key aspects of the diagnostic work-up of patients presenting with parkinsonism:

- 1 Clinical diagnostic criteria
- 2 Genetic testing
- 3 Autonomic function testing
- 4 Olfactory tests
- 5 Drug challenge tests
- 6 Neurophysiological tests
- 7 Neuropsychological tests

## 8 Neuroimaging

## 9 Economic issues

Groups of experts were allocated to each section and asked to provide an evidence-based recommendation level for the assigned diagnostic tool. To this end, MEDLINE, EMBASE and Cochrane libraries were searched for relevant citations up to June 2011. Consensus on the guidelines was finally reached within the Task Force.

The recommendations have been developed according to the EFNS Evidence Classification Scheme for diagnostic measures [3].

In this statement, recommendations for diagnostic investigations in PD are therefore graded as follows:

- Level A – effective
- Level B – probably effective
- Level C – possibly effective

A Level A or B recommendation does not mean that this test should be employed in all patients of a certain group, but simply means that the test has good diagnostic accuracy. It is for the physician to decide whether or not to use it in the given patient. For example, a Level A recommendation for an imaging test based on excellent diagnostic performance may still not mean that a clear-cut patient with a solid clinical diagnosis should have this test.

## Section 1: clinical diagnostic criteria for PD

Several sets of clinical diagnostic criteria have been proposed, based mainly on the presence of the classi-

**Table 1** Queen Square Brain Bank UK PDS Brain Bank Criteria for the diagnosis of PD [4,6]*Step 1 Diagnosis of parkinsonian syndrome*

Bradykinesia (slowness of initiation of voluntary movement with progressive reduction in speed and amplitude or repetitive actions) and at least one of the following:

- Muscular rigidity
- 4- to 6-Hz rest tremor
- Postural instability not caused by primary visual, vestibular, cerebellar or proprioceptive dysfunction

*Step 2 Exclusion criteria for Parkinson's disease*

- History of repeated strokes with stepwise progression of parkinsonian features
- History of repeated head injury
- History of definite encephalitis
- Oculogyric crises
- Neuroleptic treatment at onset of symptoms
- More than one affected relative (\*)
- Sustained remission
- Strictly unilateral features after 3 years
- Supranuclear gaze palsy
- Cerebellar signs
- Early severe autonomic involvement
- Early severe dementia with disturbances of memory, language and praxis
- Babinski sign
- Presence of a cerebral tumour or communicating hydrocephalus on CT scan
- Negative response to large doses of L-dopa (if malabsorption excluded)
- MPTP exposure

*Step 3 Supportive prospective positive criteria of Parkinson's disease*

Three or more required for the diagnosis of definite Parkinson's disease:

- Unilateral onset
- Rest tremor present
- Progressive disorder
- Persistent asymmetry affecting the side onset most (\*)
- Excellent response (70–100%) to L-dopa
- Severe L-dopa-induced chorea
- L-dopa response for 5 years or more (\*)
- Clinical course of 10 years or more (\*)
- Hyposmia
- Visual hallucinations

(\*) Criteria that will need future revision.

cal motor signs of the disease, combined with the absence of incompatible or atypical signs (the so-called red flags suggestive of atypical parkinsonism). The most widely used clinical criteria for the diagnosis of PD are those introduced by the Queen Square Brain Bank (QSBB) [4]. These criteria provide a three-step method: (Table 1)

- 1 Signs that *must* be present
- 2 Signs that should *not* be present
- 3 Supportive criteria

The first diagnostic step requires the presence of bradykinesia. Crucially, bradykinesia is not just slowness of movement or movements. It is rather meant as *progressive fatiguing and decrement of repetitive alternating movements* during finger or foot tapping [5]. The second step involves a checklist of symptoms and signs that argue against a diagnosis of PD. Finally, the diagnosis of PD requires the presence of three or more supportive criteria (Table 1). Recently, hyposmia and hallucinations have been added to this list [6].

The accuracy of the QSBB clinical diagnostic criteria has been retrospectively assessed in two clinical-pathological studies (class III evidence) [7], (class III evidence) [8]. In a series of 100 cases with pathologically proven PD, the QSBB clinical diagnostic criteria were applied retrospectively, and the diagnostic accuracy proved to be 82% [7]. A more recent study (published 10 years after the previous publication) involved a series of 143 cases with pathologically proven PD. In this study, the QSBB clinical diagnostic criteria were mostly applied by movement disorder experts [8]. The results showed an overall sensitivity for PD clinical diagnosis of 91.1%, a specificity of 98.4%, a positive predictive value of 98.6% and a negative predictive value of 90%. The clinical diagnostic accuracy was thus improved over time, suggesting an optimized use of the QSBB criteria and its supportive and non-supportive signs.

Clinical expertise of the neurologist assessing PD diagnosis has been shown to predict the diagnostic effectiveness of the QSBB clinical diagnostic criteria in two independent studies [1,9]. In the first study, the QSBB clinical diagnostic criteria were applied by movement disorder specialists to 402 cases previously diagnosed as PD from general practitioners in North Wales [9]. A definite diagnosis of PD could be reached in only 53% of cases, suggesting an error rate of 47% outside of specialized centres. The most common misdiagnoses were essential tremor, Alzheimer's disease and vascular parkinsonism. The second study compared the diagnostic accuracy of PD clinical diagnosis, as made by movement disorder experts, in comparison with non-expert physicians in the community [1]. In this study, 126 patients with a pre-existing clinical diagnosis of probable or possible PD underwent diagnostic reassessment by movement disorder specialists using the QSBB clinical diagnostic criteria. The results showed that experts reached a greater sensitivity (93.5% for experts versus 73.5% for non-experts) and positive predictive value (88.7% for experts versus 73.5% for non-experts), whereas the negative predictive value was similar (76.9% for experts versus 79.1% for non-experts) [1]. These

results underscored a relatively high diagnostic inaccuracy by non-experts.

Even if made by a movement disorder expert, PD diagnosis may change at follow-up, for several reasons: development of atypical signs (red flags), insufficient response to dopaminergic treatment or neuroimaging clues for an alternative diagnosis.

In prospective studies with PD cohorts initially recruited from experts according to the QSBB criteria, change of diagnosis occurred in 6–8% of cases [10,11]. This suggests a relative low rate of misclassification, if the diagnosis is initially assessed by a movement disorder expert.

Although the QSBB clinical diagnostic criteria are widely used in clinical practice, a number of pitfalls have been recognized:

- 1 Having more than one affected relative cannot be considered an exclusion criterion of PD anymore;
- 2 Some of the supportive criteria such as persistent asymmetry, prolonged disease course or continuous levodopa response may occur in atypical parkinsonian disorders as well. A critical revision of the QSBB criteria will be required to address these drawbacks.

Other diagnostic criteria are shown as supporting information in the online version of this article (Data S1).

## Recommendations

Only the QSBB clinical diagnostic criteria have been validated by Hughes *et al.* [8] and are therefore recommended as *probably effective* (Level B) for clinical practice.

## Section 2: genetic testing

These recommendations are formulated according to the criteria established by the EFNS [3], with some modifications accounting for the specific nature of genetic tests [12]. Genetic testing is by definition the gold standard for the diagnosis of a genetic disease (barring the rare event of a laboratory error). Therefore, the diagnostic accuracy of genetic testing cannot be measured by using another method as reference investigation. Therefore, the level of recommendation for genetic testing has been based on the quality of available studies investigating the nature and frequency of mutations of a given gene amongst clinically defined series of patients.

Because all the available studies have been retrospective (i.e. looking for specific mutations amongst previously ascertained and clinically diagnosed series) and because the formal execution of the genetic test-

ing on anonymously coded DNA samples by laboratory technicians can be practically considered as equivalent to a blinded testing condition, the studies are classified as class III evidence, which leads to Level B recommendation.

With few notable exceptions in some populations, <5% of all PD cases are caused by known single-gene mutations. Therefore, genetic testing will allow an accurate aetiological diagnosis only in a minority of patients [12,13]. As no specific treatment is available for genetic cases, the purpose of genetic testing in PD is essentially oriented at patient and family members' counselling with respect to disease prognosis and genetic risk of unaffected relatives.

The results of diagnostic genetic testing have implications in the psychological, social and professional domains of both patients and relatives. Therefore, informed consent and privacy warranty are important issues. Further, the genetic testing should always be performed by a professional team and include pre-test and post-test counselling [12].

### Autosomal dominant forms of PD

#### SNCA

Point mutations in the gene for alpha-synuclein (SNCA), as well as duplications and triplications of the entire gene locus, can cause PD. The point mutations E46K and A53T and also gene triplications cause an aggressive form of PD with relatively early onset [14]. Most cases have been identified in families with multiple affected individuals. The A30P mutation, as well as SNCA duplications, causes more typical PD with late onset. Incomplete penetrance of SNCA duplications may result in a negative family history [15]. Nevertheless, all the above cited SNCA mutations are rare in sporadic patients.

#### Leucine-rich repeat kinase 2

Mutations in the gene for leucine-rich repeat kinase 2 (LRRK2) are a much more common cause of dominant PD. Up to date, 6 mutations are known to be pathogenic (N1437H, R1441C, R1441G, Y1699C, G2019S and I2020T), based on their cosegregation in PD families. Overall, LRRK2 mutations account for 5–15% of dominant familial [16], and 1–3% of sporadic PD cases [17], with higher prevalence of some founder mutations in specific populations. The G2019S variant is found in 15–30% of Ashkenazi Jewish [18] and up to 40% of North African Arab patients (both sporadic and familial), whilst the R1441G variant is a Basque founder mutation with a prevalence of 15% in patients with PD from this region [19].

Clinically, LRRK2-associated PD is indistinguishable from sporadic typical PD, as to age of onset and symptomatology. Reduced penetrance of 30–70% has been estimated for the G2019S mutation.

#### *Glucocerebrosidase*

Heterozygous mutations in the gene for glucocerebrosidase (GBA) are a frequent and strong risk factor for PD, especially in some populations [20–22]. Some mutations are more prevalent in specific ethnic groups, such as the N370S mutation amongst Ashkenazi Jewish. According to current odds ratios' estimates (pooled OR > 5), GBA mutations have much lower effect size than classical mendelian mutations. In other words, GBA mutations display a markedly reduced penetrance. However, an accurate estimate of ORs and penetrance is currently possible only for the most common GBA mutations. Clinically, patients with GBA pathogenic mutations have typical PD with possibly slightly earlier-onset age.

#### **Autosomal recessive forms of PD**

Homozygous or compound heterozygous mutations in each of the following three genes: *parkin* (PARK2), *PINK1* (PARK6) and *DJ-1* (PARK7), can cause autosomal recessive forms of PD. Mutations in the *parkin* gene are the most common. Up to half of familial PD cases with a disease onset under the age of 45 and a recessive pattern of inheritance are caused by *parkin* mutations. Similarly, *parkin* mutations underlie 75% of the sporadic PD cases with disease onset before the age of 45 [23]. Mutations in the *PINK1* and *DJ-1* gene are less common, accounting for up to 1–8% and 1–2% of the sporadic cases with early onset, respectively. The likelihood of PINK-1 and DJ-1 mutations is inversely proportional to the age of PD onset: the earlier the onset, the higher the likelihood. A large number of mutations have been identified in these three genes worldwide, including point or small mutations, but also large genomic rearrangements (deletions and multiplications). The latter are especially frequent in the *parkin* gene. Therefore, sequencing and dosage assay of all exons is required for an accurate screening of these three genes.

In some cases, only a single heterozygous mutation is detected in one of the genes for recessive PD. This finding does not lend itself to a clear interpretation. On the one hand, a single heterozygous mutation might be coincidental (unrelated to the disease), as supported from the screening of large case-control series [24]. On the other hand, a single heterozygous mutation in one of these genes might also act as a risk

factor for PD. Last, a second pathogenic mutation might be present, but escapes detection by the standard screening methods.

The clinical phenotype associated with *parkin* mutations is characterized by early-onset parkinsonism, good and prolonged L-dopa responsiveness and overall benign course. The average age at onset is in the 30s in most patients, but late-onset cases have been described as well. Motor fluctuations and levodopa-induced dyskinesias are frequent, whereas marked cognitive or autonomic disturbances are rare [25]. The phenotype associated with *PINK1* and *DJ-1* mutations has been studied in a smaller number of patients, but it is basically indistinguishable from that of *parkin*.

#### **Atypical recessive forms**

Mutations in the *ATP13A2* (*PARK9*), *PLA2G6* (*PARK14*), *FBXO7* (*PARK15*) and other genes cause rare recessive forms of parkinsonism, usually with very early onset (<30 years) and atypical features (pyramidal, dystonic, ocular movement and cognitive disturbances).

#### **Recommendations**

Available evidence provides a Level B recommendation for the use of genetic testing in the diagnosis of PD. Genetic testing for specific mutations is recommended on an individual basis, and specific features, particularly family history and age of onset, must be taken into account:

I Testing for *SNCA* point mutations and gene multiplications is recommended only in families with multiple affected members in more than one generation suggestive of dominant inheritance, with early- or late-onset PD

II *LRRK2* genetic testing for counselling purposes, specifically directed at known pathogenic variants is recommended in patients with a clinical picture of typical PD and a positive family history suggestive of dominant inheritance

III In sporadic patients, genetic testing should be limited to the search for known *LRRK2* founder mutations in the appropriate populations (i.e. with known high mutation frequencies)

IV Genetic testing for GBA gene mutations is recommended in patients with typical PD with or without a positive family history, limited to the known founder mutations of established pathogenic role in the appropriate populations

V Genetic testing of the *parkin*, *PINK1* and *DJ-1* genes for counselling purposes is recommended in

patients with typical PD and positive family history compatible with recessive inheritance, particularly when the disease onset is before the age of 50 years. For sporadic cases, *parkin*, *PINK1* and *DJ-1* genetic testing is recommended when onset is very early, particularly before the age of 40

VI Testing of the *ATP13A2*, *PLA2G6* and *FBXO7* genes might be considered in cases with very-early-onset PD, if no mutation in *parkin*, *PINK1* and *DJ-1* gene has been found.

### Section 3: autonomic function tests

Symptoms suggestive of autonomic failure are common in PD, with increasing prevalence and severity as the disease progresses. A subgroup of patients with PD develop autonomic symptoms such as orthostatic hypotension (OH), urogenital failure or constipation early on, sometimes even prior to motor onset. Differentiation from multiple system atrophy (MSA) on clinical grounds may be difficult in this situation. Recognition of autonomic failure in PD by means of appropriate autonomic function tests (AFTs) is important because of diagnostic and therapeutic implications. Most reports on AFTs in PD represent class IV evidence. AFTs comparing PD and MSA patients have reported the differences between the two diseases in cardiovascular [26–28], urinary [29–31], anorectal [32], skin temperature and sweating regulatory functions [27,28,33,34]. However, multiple studies have shown that cardiovascular AFTs alone do not distinguish between PD, MSA and progressive supranuclear palsy (PSP) [35,36]. Detrusor-sphincter dyssynergia, large post-void residuals and an open bladder neck are common urodynamic findings in MSA [30], whilst these are usually less pronounced in idiopathic PD [37]. Anorectal manometric patterns do not differentiate MSA from PD patients. Both MSA and PD patients may show an abnormal straining pattern, decreased anal tone or both dysfunctions. However, in MSA, sphincter abnormalities occur earlier and develop faster than in PD [32].

Thermoregulatory sweat tests have been investigated in PD and MSA with controversial results [35,38]. In one study [35], MSA and PD patients showed similar patterns of anhidrosis. In a second study, progressively wider anhidrotic skin areas could be shown in MSA [38]. Skin temperature and blood flow measurements have been proposed to discriminate MSA from PD (cold hand sign). However, there is considerable overlap between these disorders [33,39].

In general, most of the AFT studies segregated patients with parkinsonism according to clinical diag-

nostic criteria into MSA or PD depending on the presence of overt autonomic failure. This may have increased the likelihood of abnormal test results in MSA patients. Unbiased AFT data are sparse, suggesting substantial overlap between MSA and PD patients (class III evidence) [35].

### Neurophysiological assessment of autonomic function

In contrast to PD and other degenerative parkinsonian syndromes, R-R interval variation at ECG examination is reduced and the sympathetic skin response is abnormal in MSA [27]. These tests might be used for the differentiation of MSA from other parkinsonian syndromes.

### Recommendations

Autonomic function tests are principally helpful to detect autonomic impairments in patients with PD. Some dysautonomic features, like OH or post-void residual volume, have important therapeutic implications. However, at the moment, there is insufficient evidence to provide a level of recommendation for AFTs in PD.

### Section 4: olfactory tests

The reported prevalence of olfactory deficit in PD ranges from 73% to 90% [40–45]. The best validated and most widely used quantitative screening tests for odour identification are the UPSIT and the smell test. The smell test is also available with ethnically specific odours [class I, 40–45]. In contrast to PD, published data suggest that olfactory function is mildly impaired or normal in MSA, essential tremor, PSP and corticobasal degeneration (CBD) [class I, 45–47]. Also, short reports indicate that in vascular parkinsonism and drug-induced parkinsonism, olfactory function is mostly unaffected [class I, 48,49]. In monogenic PD, especially in the recessive forms, olfactory dysfunction is less impaired than in PD [class I, 50,51]. Current evidence suggests that odour detection and identification deficits are rather independent of the disease stage, duration or the use of antiparkinsonian medication. To the contrary, impairment of odour discrimination increases with disease progression, although controversial results have been obtained in different studies [class I, 40,41,43]. Impaired olfaction is nowadays recognized as non-motor symptom of PD that may be detectable even in the pre-motor stage [class I, 52–55]. Smell identification score appears to correlate with sympathetic denervation of the heart measured with iodine-123-labelled meta-iodobenzylguanidine

(MIBG) in early PD patients [56]. Several independent studies have shown that hyposmia positively predicts the development of PD [class I, 52,55,57–59]. According to population-based (class I evidence) [52] and other prospective studies (class I evidence) [53–55], sensitivity of hyposmia for the identification of individuals at risk for PD is high (>80%), but specificity is low as up to one-third of the elderly population has olfactory loss.

### Recommendations

Olfactory testing differentiates PD from  
I Atypical and secondary parkinsonian disorders (Level A).

II Recessive forms of PD (Level A).

Current evidence suggests that olfactory testing may be considered as a diagnostic screening procedure (Level A), but not as an indicator of disease progression (Level B) in PD. Olfactory testing is a sensitive screening test for pre-motor PD (Level A), but not specific. Thus, olfactory testing can be envisioned in a screening battery for PD. If hyposmia is detected, then other specific tests for PD should follow.

### Section 5: drug challenge tests

The clinical diagnosis of PD is supported by a favourable response to dopaminergic drugs, whilst a failure represents an exclusion criterion. Based on this assumption, acute challenge tests with various compounds have been proposed since the 1980s as predictors of long-term L-dopa responsiveness and as supportive criterion for PD diagnosis [60–64].

Heterogeneous methodologies (e.g. levodopa versus apomorphine, high dose versus low dose, fixed dose versus flexible dose based on the body weight) have influenced the results of the above-mentioned studies to a great extent. They have also impacted on the practical use of the test (part of the initial screening in de novo patients or re-evaluation in patients with a previous diagnosis of PD or other parkinsonian conditions). Additionally, no agreement exists on the definition of a positive response to a drug challenge.

A comprehensive systematic review of studies examining the diagnostic accuracy of acute challenge tests with levodopa and/or apomorphine in the diagnosis of PD versus other parkinsonian syndromes was published in 2000 [65]. The authors of this review concluded that the accuracy of the acute challenge tests is similar to that of chronic levodopa therapy, essentially providing no further clues for the differential diagnosis of parkinsonian syndromes. As

most patients will eventually be scheduled for dopaminergic medications, these tests provide limited positive diagnostic benefit at the expense of adverse events.

Almost contemporarily, a consensus meeting on the role of acute dopaminergic challenge in PD was held [66]. Conclusions from this meeting were summarized in a subsequent paper, which described the scientific background and supplied practical guidelines to perform and evaluate acute challenge tests in parkinsonian disorders. In particular, the consensus meeting participants agreed that lack of motor improvement following an acute challenge in a drug-naive parkinsonian patient, or in a patient at treatment beginning, does not always exclude a positive chronic response. The false-negative rate of dopaminergic challenge tests in drug-naive patients, as to prediction of L-dopa chronic responsiveness, may be as high as 40%. Furthermore, following a negative response to apomorphine, an additional levodopa challenge may be warranted, because it has been occasionally reported that patients who do not respond to apomorphine may respond to levodopa.

In a more recent statement from a Committee of the American Academy of Neurology (AAN) [67], it was recognized that levodopa and apomorphine challenge tests are probably useful in distinguishing PD from other parkinsonian syndromes. This conclusion was drawn because of two studies (class I evidence) [68] (class III evidence) [69]. The members of the AAN Committee concluded that diagnostic yields appear to be similar between the two tests. In addition, the committee highlighted a relative high rate of false-negative and false-positive results. Further, according to AAN Committee, these studies generated insufficient evidence due to the lack of post-mortem validation.

### Recommendations

Drug challenge tests are not recommended for the diagnosis of de novo parkinsonian patients. There is an insufficient evidence to support their role in the differential diagnosis between PD and other parkinsonian syndromes.

### Section 6: neurophysiological tests

#### EEG

Routine EEG can be useful in PD patients with suspected dementia, but it cannot differentiate PD from other parkinsonian disorders [70,71].

### Evoked potentials

A number of unblinded multimodal evoked potential studies have been performed in PD versus demented or atypical parkinsonian patients, showing some differences that may help in the differential diagnosis of parkinsonian syndromes, if confirmed in prospective blinded studies [72–96].

### Sleep studies

Polysomnography can be used to investigate REM and other sleep disorders, as well as excessive daytime sleepiness. The latter are frequent in PD and MSA, but uncommon in other types of degenerative parkinsonism [97–101].

### Tremor analysis

Tremor analysis can help differentiate parkinsonian rest and postural tremor from other causes of tremor [102–105].

### EMG/ENG studies

Routine EMG/ENG studies are usually normal in PD. Anal sphincter EMG is usually normal in PD, whereas it can be abnormal in atypical parkinsonism, particularly in MSA [106–108].

### Recommendations

No recommendation can be given on neurophysiological tests because of the low evidence level of the available studies.

## Section 7: neuropsychological tests

The assessment of cognitive and neuropsychiatric function in the diagnostic work-up of PD is more aimed at the exclusion of *other* parkinsonian disorders, than being confirmatory for the diagnosis of PD. For example, the combination of parkinsonism and dementia at first presentation could be suggestive of dementia with Lewy bodies (DLB), or even Alzheimer's disease, whilst prominent frontosubcortical cognitive impairment could point more towards a diagnosis of PSP [109,110].

This is not to say that cognitive impairment at baseline is incompatible with the diagnosis of PD. A recent multicentric pooled analysis of 1346 patients with PD from eight different cohorts found that 25.8% (95% CI: 23.5–28.2) had mild cognitive impairment [111]. Several of these cohorts had examined

incident cases. By definition, this cognitive impairment is insufficient to interfere with activities of daily living, and the patients are thus not demented.

Collateral history from a carer is helpful in determining the effects (if any) of cognitive impairment upon daily function. The National Institute of Neurological Disorders and Stroke (NINDS) PD Common Data Elements (CDEs) has recently recommended scales that can be readily used in data collection for clinical trials that are as broad as possible and applicable to all stages of PD. In terms of screening for PD dementia (PDD), the Mattis Dementia Rating Scale (DRS-2), a validated instrument for the diagnosis of PDD [112], scored most highly, but is impractical in routine clinical practice because of the time it takes to administer [113]. Other scales that were recommended for screening purposes were the Addenbrooke's Cognitive Examination-Revised (ACE-R) [114,115] and the Montreal Cognitive Assessment (MoCA) [116,117]. Both the ACE-R and the MoCA are freely available. Two scales specifically developed to rate cognitive functions in PD, the SCOPA-cog [class I, 118] and the PD-CRS [class I, 119], are also suitable for research purposes and interventional trials [120]. The PD-CRS has the additional advantage of distinguishing frontosubcortical and posterior cortical patterns of cognitive impairment [121]. It was considered by the NINDS review as being comprehensive, sensitive (94%) and specific (94%) in screening for PDD, and able to distinguish between PD, mildly cognitively impaired and demented PD patients. Although widely used, the Mini Mental State Examination (MMSE) does not capture domains germane to PD (i.e. executive dysfunction) and suffers from ceiling effects (i.e. a normal score does not rule out cognitive disturbances or dementia in PD). The sensitivity of this instrument in the context of detecting dementia in PD may be improved considerably by the addition of simple tests (i.e. immediate and delayed recall, verbal fluency and a 'pill questionnaire') [122]. Nevertheless, other brief screening instruments may help in clinical practice to accurately and quickly screen for PDD. The recently developed PDD short screen (PDD-SS) (class I evidence) [123] is a brief screening test displaying similar accuracy as the DRS-2 for the diagnosis of dementia with a considerable shorter administration time (5–7 min).

Regarding neuropsychiatric function, we recommend the brief assessment of sleep, mood and psychosis, as these features may have diagnostic significance for PD. A history suggestive of REM sleep behaviour disorder (RBD) would be suggestive of a 'synucleinopathy', but the presence of RBD would not itself differentiate between PD, DLB and MSA. On the other



hand, the presence of RBD in a patient with an undiagnosed tremor disorder would point against essential tremor or dystonic tremor. Significant depressive disorder can confound cognitive assessment and should be screened for, whilst spontaneous visual hallucinations (i.e. occurring in the absence of dopaminergic treatment) could be suggestive of DLB.

Again, collateral history from a carer is useful to determine behavioural change, sleep disorders and psychotic features. Polysomnography is the 'gold standard' for the diagnosis of RBD, but impractical in routine clinical assessment. The RBD Screening Questionnaire has a sensitivity of 0.96 and a specificity of 0.56 for the diagnosis of RBD when a cut-off of five points is applied (class I evidence) [124]. Part I (Non-Motor Aspects of Experiences of Daily Living) of the MDS-UPDRS includes validated screening questions for hallucinations and psychosis, as well as depressed mood, and is recommended as a 'clinician-friendly' screening instrument (class I evidence) [125].

### Recommendations

An assessment of neuropsychological functioning in a person presenting with parkinsonism suspected of being PD is recommended (Level A) and should include

- I A collateral history from a reliable carer
- II A brief assessment of cognition
- III Screening for RBD, psychotic manifestations and severe depression.

## Section 8: neuroimaging

### Transcranial sonography

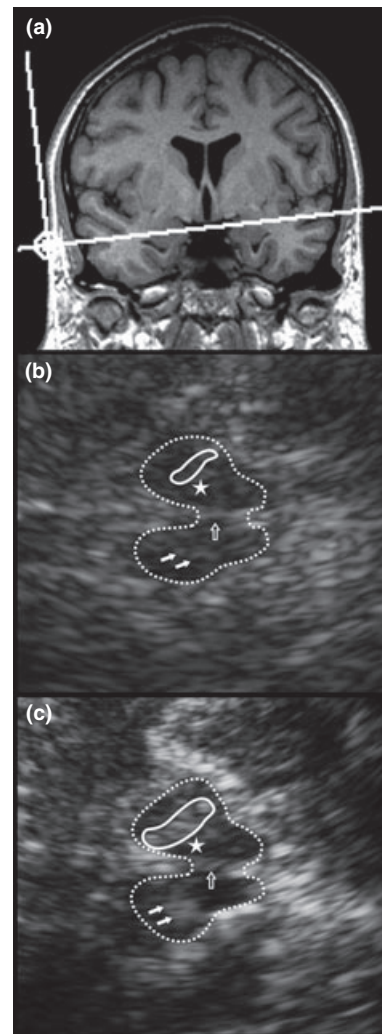
Because hyperechogenicity of the substantia nigra (SN) was first described by means of transcranial sonography (TCS) in PD more than 15 years ago, the finding has been confirmed by many groups all over the world [126–134] (although the utility is not universally accepted and TCS is infrequently performed in several countries including the USA). Guidelines for the assessment of nigral hyperechogenicity have been published [135–137], and the technique is being used at an increasing number of places for diagnostic and scientific purposes concerning parkinsonian syndromes.

Applying high-end ultrasound systems with standardized settings [135–138], the resolution of intracranial structures is, with  $0.7 \times 1.1$  mm in the focal zone, very high [139]. Similarly, a satisfactory reproducibility is indicated by an intra- (ICC 0.96 and 0.93, respectively, for both hemispheres) and inter-rater reli-

ability (ICC 0.84 and 0.89) for quantitative computerized SN planimetry [140].

For the diagnostic work-up of parkinsonian syndromes, two standardized scanning planes are used:

- The mesencephalic scanning plane in which the SN, the red nucleus and the hyperechogenic midline (brainstem raphe) are visible (Fig. 1);
- The third ventricular plane in which the ventricular system and the normally hypoechogenic basal ganglia can be delineated.



**Figure 1** Transcranial sonography of the mesencephalic brainstem. The mesencephalic brainstem is scanned parallel to the orbito-meatal line (a). (b) Depicts the mesencephalic brainstem (surrounded by dotted line) of a healthy control with normal echogenicity of the substantia nigra (SN) (encircled ipsilaterally and marked with arrows contralaterally to the insonating probe), the area of the red nucleus (asterisk) and the hyperechogenic midline raphe (open arrow). In a patient with Parkinson's disease (PD), the area of hyperechogenicity at the anatomical site of the SN is enlarged (c; encircled ipsilaterally and marked with arrows contralaterally).

Planimetric measurement of the area of hyperechogenicity at the anatomical site of the SN enables the categorization of SN echogenicity into normal or abnormal according to cut-off values established with reference to percentile ranks assessed in healthy cohorts.

Substantia nigra areas are classified as *markedly hyperechogenic* (above the 90th percentile of the healthy population) or *moderately hyperechogenic* (between the 75th and 90th percentile, see also [135–137]). Measurement of the ventricular system and semiquantitative assessment of the basal ganglia are primarily important for the differential diagnosis of PD.

For clinical practice, it is important to realize that proper evaluation of the SN depends on

- Application of ultrasound-specific cut-offs
- Quality of the temporal bone window – in about 10% of the Caucasian population, the transtemporal bone window is not sufficient to depict the relevant structures
- To some extent experience of the investigator (see also [141]).

The current evidence suggests that TCS is useful in the diagnosis of parkinsonian syndromes, especially with regard to

- Differentiation of atypical parkinsonian syndromes (APS; class I evidence, Level A) [142]
- Differentiation of secondary parkinsonian syndromes (class I and II evidence, Level A – for sensitivity, specificity and predictive value of parameters) [132]
- Early diagnosis of PD, in clinically unclear cases (class II evidence) [143]
- Detection of subjects at risk for PD (class I) including asymptomatic mutation carriers for monogenic forms of PD [133–150].

Substantia nigra hyperechogenicity occurs in about 10% of the healthy population [151,152], a proportion much larger than the prevalence of PD, and may occur in a much smaller proportion in subjects with other neurodegenerative disorders [133,153–156], frequently in heavy metal storing diseases [157–159] and sometimes in neuroinflammatory disorders [160]. Because specificity for the development of incident PD is about 80%, the application of TCS should be therefore combined with other screening procedures.

Stability of SN hyperechogenicity during the disease course is still an unclear issue. Most reports argue for a stable area of echogenicity [126,136,161,162], which, however, may increase with age [163], thus hindering its use as progression marker in PD.

## Recommendations

Transcranial sonography is recommended (Level A) for

I Differential diagnosis of PD from APS and secondary parkinsonian syndromes

II Early diagnosis of PD

III Detection of subjects at risk for PD

The technique is so far not universally used and requires some expertise. Because specificity of TCS for the development of PD is limited, TCS should be used in conjunction with other screening tests.

## Magnetic resonance imaging

In clinical practice, conventional magnetic resonance imaging (cMRI) with visual assessment of T2- (sensitive to changes in tissue properties, including tissue damage) and T1-weighted (important for anatomical details providing good grey matter/white matter contrast) imaging is a well-established method for the exclusion of symptomatic [164] (class IV evidence studies available – for review, see [164]).

Several findings on conventional structural MRI have been described as diagnostic markers of MSA (See Table 2). These include atrophy and signal alterations at 1.5 T in the putamen and several infratentorial regions, such as

- Hyperintense putaminal rim with or without hypointensity in the dorsolateral part of the putamen (Fig. 2)
- ‘Hot cross bun’ sign of the pons (Fig. 3)
- Atrophy of the cerebellum
- Hyperintensity in the middle cerebellar peduncle (MCP)

compared to PD, PSP and controls as well as pontine and putaminal atrophy compared to PD and controls (class II evidence) [165–168]; (class III evidence) [167–169,169–175]; (class IV evidence) [176]. Specificity of the aforementioned abnormalities in differentiating MSA from PD and healthy controls is considered quite high, whereas sensitivity – particularly in early disease stages – seems to be insufficient [164]. However, sensitivity of signal alterations can be somewhat improved by modifying technical aspects such as spatial resolution by using thinner slices or modifying relaxation contrast by using T2\*-weighted gradient echo sequences [168,174].

Other abnormalities in MSA-P, which may provide a differentiation from PD, PSP and controls, include

- Posterolateral linearization of the putaminal margin (versus convex in controls) (class III evidence) [177]
- Putaminal hyperintensity on T1-weighted images (class III evidence) [169]

**Table 2** Routine MRI findings in atypical parkinsonism [2,164]

<i>Multiple system atrophy</i>	
• Putaminal atrophy	
• Putaminal slit sign	
• Putaminal hypointensity	
• Pontine and/or bulbar atrophy	
• Cerebellar and/or dentate atrophy	
• Atrophy of the MCP	
• Reduced MCP diameter (<8.0 mm in reference [188])	
• Dilatation of the fourth ventricle	
• Signal increase in MCP	
• Signal increase in cerebellum	
• Signal increase in inferior olives	
• Signal increase in pontine fibres (hot cross bun sign)	
<i>Progressive supranuclear palsy<sup>a</sup></i>	
• Midbrain atrophy	
• Indirect signs of midbrain atrophy:	
○ Reduced AP midbrain diameter (< 14 mm in reference [190])	
○ Abnormal superior midbrain profile <sup>b</sup>	
○ ‘(king) penguin silhouette’ or ‘hummingbird’ sign <sup>c</sup>	
○ Reduced ratio between midbrain and pontine areas	
○ Increased MRPI <sup>d</sup>	
• Dilatation of the third ventricle	
• Atrophy of the SCP	
• Signal increase in SCP (on FLAIR images)	
• Signal increase in globus pallidus	
• Signal increase in red nucleus	
• Putaminal atrophy	
• Frontal and parietal atrophy	
<i>Corticobasal degeneration<sup>e</sup></i>	
• Cortical atrophy (mostly frontoparietal and asymmetric, sometimes even global and symmetric)	
• Putaminal hypointensity <sup>f</sup>	
• Hyperintense signal changes in the motor cortex or subcortical white matter	

Signal changes refer to 1.5-Tesla MRI scanners.

MCP, middle cerebellar peduncle; SCP, superior cerebellar peduncle; AP anterior–posterior; MRPI, MR parkinsonism index.

<sup>a</sup>Almost all MRI studies of PSP included patients suffering from the most reliably identifiable classic picture of PSP (i.e. Richardson’s syndrome).

<sup>b</sup>Flat or concave versus convex aspect in healthy people.

<sup>c</sup>The shapes of the midbrain tegmentum (the bird’s head) and pons (the bird’s body) resemble a lateral view of a standing king penguin or hummingbird.

<sup>d</sup>MRPI: multiplying the ratio of pontine to midbrain area by the ratio of the MCP to SCP width.

<sup>e</sup>Given the pathological heterogeneity of a ‘corticobasal syndrome’, including CBD and other neurodegenerative causes such as PSP, Pick’s disease and other frontotemporal lobar degenerations, MRI studies of clinically defined CBD must be discussed with a grain of caution.

Further, visual assessment of

- Atrophy of the superior cerebellar peduncle (SCP) (class II evidence) [178]

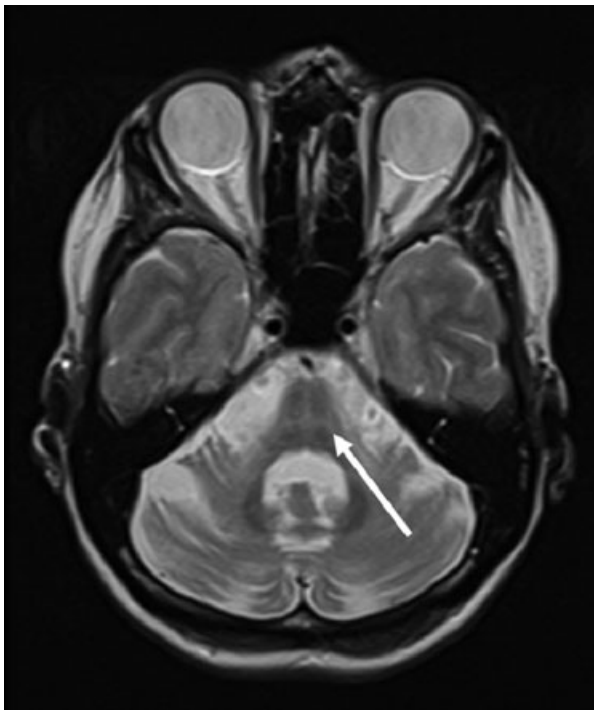
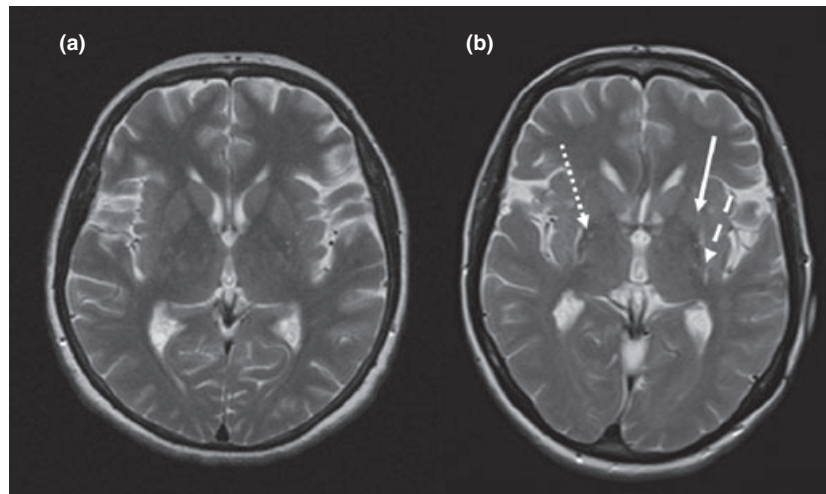
- ‘Penguin silhouette’ or ‘hummingbird’ sign (where the shapes of the midbrain tegmentum – that is, the bird’s head – and pons – that is, the bird’s body – resemble a lateral view of a standing king penguin or hummingbird; Fig. 4) on midsagittal MR images (class II evidence) [179]; (class III evidence) [180]; (class IV evidence) [181]
- Enlarged 3rd ventricle (class II evidence) [182]; (class III evidence) [171,173]

can point the diagnosis towards PSP versus PD, controls and MSA (Level C), whereas visual assessment of midbrain atrophy may point out a diagnosis of PSP versus PD or controls (class III evidence) [171,173,175].

Putaminal, pontine and midbrain atrophy seems to occur in both MSA and PSP patients, although putaminal and pontine atrophy is more common in MSA and midbrain atrophy more common in PSP [171,173]. Other abnormalities in PSP include an abnormal superior profile of the midbrain (flat or concave versus convex aspect in healthy people) compared to patients with PD and controls [183] (class III evidence) [183] and increased signal changes in the SCP on FLAIR images compared to controls, PD and MSA patients [184] (class III evidence) [183].

Simple quantitative measures of diameters, areas and volumes including region of interest (ROI)-based assessment of various structures on MRI have been applied as an indirect measure of brain structures known to be atrophic in different parkinsonian disorders for the differential diagnosis of neurodegenerative parkinsonism. Volume loss of different supratentorial and infratentorial brain structures, measured by MR volumetry (MRV) with semi-automatic segmentation techniques on a ROI approach, has been reported in patients with APS, whereas most studies were not able to detect such volume differences between patients with PD and controls, whilst with advancing disease hippocampal atrophy has been reported in patients with PD compared to healthy controls at a group level [164]. Whereas patients with MSA demonstrated significant reductions in mean striatal, brainstem and cerebellar volumes, in patients with PSP significant reductions in whole brain, striatal, brainstem – especially midbrain – and frontal volumes have been shown [164]. By the application of stepwise discriminant analysis to MRV on a ROI basis, there was a good discrimination of patients with PD and controls from MSA and PSP patients. On the other hand, separation between patients with PD and controls as well as between MSA and PSP patients was insufficient (class II evidence) [185]. A similar approach, in which post-mortem-con-

**Figure 2** Axial T2-weighted MR images at the striatal level in a patient with Parkinson's disease (PD; image a) and a patient with MSA-P (image b). The image appears normal in the patient with PD (image a), whilst there are putaminal atrophy (arrow), putaminal hypointensity (dotted arrow) and a putaminal hyperintense rim (dashed arrow) in the patient with MSA-P (image b).



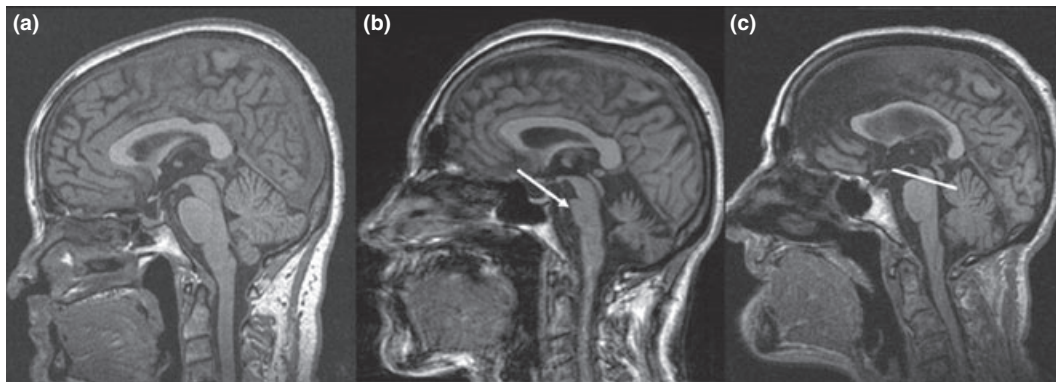
**Figure 3** Axial T2-weighted MR image in a patient with MSA-P showing the 'hot cross bun' sign (arrow) in the basis pontis.

firmed cases of PSP and CBD were used to construct the model from the discriminant analysis, achieved a good diagnostic classification of patients with CBD and PSP as well as controls (class III evidence) [186]. Several studies suggest that MR planimetry represents a simple method for the differential diagnosis of neurodegenerative parkinsonism [164,179,187–191]. A decreased MCP width ( $<8$  mm) seems to point the diagnosis towards MSA versus PD and controls (class II evidence) [188]. Studies comparing the MCP width

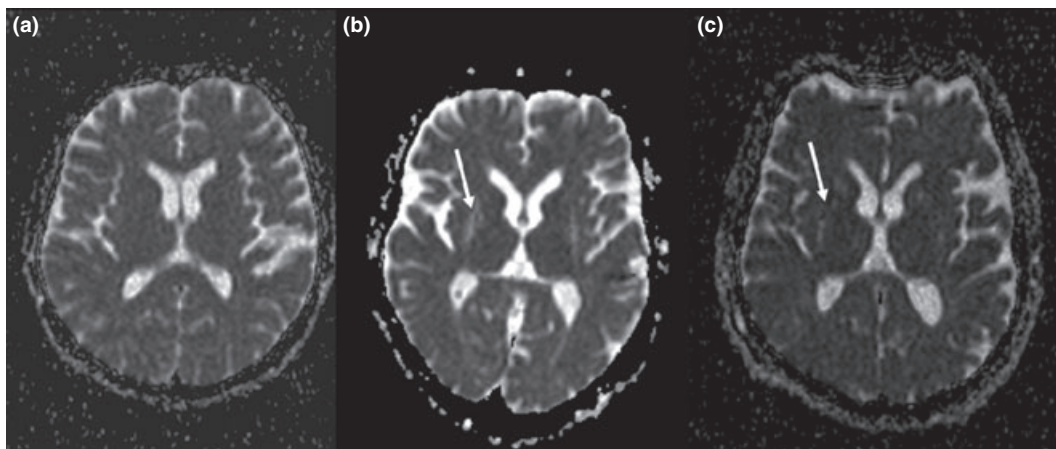
between PSP and MSA patients do not exist. A reduced ratio between midbrain and pontine areas (class II evidence) [179,189] (class III evidence) [187,191] as well as an increased MR parkinsonism index (MRPI) (i.e. multiplying the ratio of pontine to midbrain area by the ratio of the MCP to SCP width) (class II evidence) [189] (class III evidence) [187,191] can point the diagnosis towards PSP versus PD, MSA and controls [164,179,187,189–191]. A reduced anterior–posterior (AP) midbrain diameter ( $<16$  mm) was able to discriminate completely between PSP as well as patients with PD and controls in one study [190], whilst there was considerable overlap between patients with PD and patients with PSP using this marker in another study [183]. Also, there is overlap of AP midbrain diameter between PSP and MSA-P patients [171,190]. On the other hand, a midbrain AP cut-off of  $\leq 14$  mm seems to be very specific for PSP with variable sensitivity across the studies (class III evidence) [183,190]. Another study found that an AP midbrain diameter of  $<17$  mm discriminated PSP from MSA-P (class III evidence) [171].

Voxel-based morphometry and voxel-based relaxometry have been used in neurodegenerative parkinsonism [2,164]. However, despite many advantages of voxel-based analysis (including its independency from operators due to automated detection), such technique is not at the moment appropriate for the routine use in individual patients, because it involves groupwise comparisons [164].

Several studies performed on a ROI basis could demonstrate that diffusion-weighted imaging (DWI) permits to differentiate early MSA-P from PD as well as healthy subjects on the basis of increased putaminal diffusivity in MSA-P [165,192–199] (Fig. 5). Putaminal diffusivity was also increased in PSP compared to PD, but with considerable overlap



**Figure 4** Midsagittal T1-weighted MR images in a patient with Parkinson's disease (PD; image a), a patient with MSA-P (image b) and a patient with progressive supranuclear palsy (PSP; image c). There is no pontine or midbrain atrophy in the patient with PD (image a). Image b demonstrates pontine atrophy (arrow) without midbrain atrophy in the MSA-P patient. Image c demonstrates the midbrain atrophy without pontine atrophy (divided by the white line) forming the silhouette of the 'penguin' or 'hummingbird' sign with the shapes of midbrain tegmentum (bird's head – above the white line) and pons (bird's body – below the white line) looking like the lateral view of a standing penguin (especially the king penguin) or hummingbird with a small head and big body.



**Figure 5** Axial Trace(D) maps at the level of mid-striatum in a patient with Parkinson's disease (PD) (image a), a patient with MSA-P (image b) and a patient with progressive supranuclear palsy (PSP) (image c). Note the diffuse hyperintensity – corresponding to increased diffusivity – in the putamen (arrows) in the patients with MSA-P (image b) and PSP (image c)

[193,196], so that increased putaminal diffusivity can point the diagnosis towards MSA-P versus PD and controls (class II evidence) [165,192–198] (class III evidence) [199], whilst frequencies of increased putaminal diffusivity in PSP vary across the studies (class II evidence) [193,196,200] (class III evidence) [199]. Although increased putaminal diffusivity overlapped in MSA-P and PSP patients, abnormal diffusivity measures in the MCP and SCP could respectively differentiate MSA from PSP [164]. Increased diffusivity in the MCP of MSA patients (including the MSA-P variant) has been reported to have a high diagnostic accuracy for MSA (and MSA-P) with respect to PSP, PD and controls in some publications (class II evidence) [196,200]. However, there

was a considerable overlap between MCP diffusivity in patients with MSA-P versus patients with PSP, PD and controls in another study and similar MCP diffusivity values in patients with MSA-P and controls (class II evidence) [198,201]. Further studies are warranted to clarify this issue. Increased diffusivity in the SCP has been reported in patients with PSP compared to patients with PD, MSA-P and controls, (class II evidence) [201,202] (class III evidence) [199], so that increased diffusivity in the SCP can point the diagnosis towards PSP versus PD, MSA-P and controls. One study with methodological concerns [164] failed to detect diffusivity changes in the putamen in patients with MSA-P and PSP as well as in the SCP in patients with PSP (class II evidence) [200]. Similar

to PSP, CBD patients seem to display higher diffusivity in the SCP compared to patients with PD and controls, thus not allowing to differentiate PSP and CBD on the basis of diffusivity changes in the SCP (class III evidence) [199]. The same study showed similarly higher putaminal diffusivity in CBD and PSP patients with respect to PD ones and controls, allowing discrimination of these APS from idiopathic PD and controls [199]. However, complete discrimination between CBD and the other groups including PSP was only reached by applying a hemispheric symmetry ratio (i.e. smaller to the larger median value of ADC histograms of left and right hemispheres) [199]. Using 3.0-T MRI, diffusivity in the pons, cerebellum and putamen was significantly higher and coupled with significantly lower fractional anisotropy (FA) values in the same regions, in MSA compared to PD and controls. All patients who had both significantly low FA and high diffusivity in each of these three areas were MSA-P cases, and those that had both normal FA and Trace(D) values in the pons were all PD cases (class II evidence) [203].

In PD, newer quantitative imaging techniques implemented on 3-T systems (see Table 3) have shown promising results in detecting abnormalities in the SN and nigrostriatal pathways [204–207] with high diagnostic accuracy in separating PD patients from healthy controls (class II evidence) [204–207]. These findings warrant further confirmatory studies.

## Recommendations

We conclude that cMRI at 1.5 T is principally helpful to exclude symptomatic parkinsonism due to other pathologies (Level B).

1.5-T cMRI is also useful in the differentiation of PD from APS as follows:

- I) MSA signs – Putaminal atrophy and rim sign, pontocerebellar atrophy, MCP hyperintensity and hot cross bun sign (all Level A);
- II) PSP signs – Midbrain atrophy and hummingbird sign (both Level B), SCP atrophy (Level C).

Specificity of these abnormalities to differentiate APS from PD is considered quite high, whereas sensitivity, particularly in early disease stages, seems to be insufficient. A normal routine 1.5-T cMRI does not exclude MSA or PSP, if the clinical presentation is suggestive and supported by the current diagnostic criteria.

Abnormalities on DWI at 1.5 T including diffusivity changes in

- I) Putamen in patients with APS versus PD in early disease stages (especially MSA-P, Level A)

II) SCP in patients with PSP (Level B) have been described as markers, which can point the diagnosis towards MSA or PSP instead of PD.

Newer quantitative imaging techniques implemented on 3-T systems have shown promising results. However, they require further confirmatory studies.

## Single photon emission tomography

Single photon emission tomography (SPECT) with selective radioligands for striatal dopaminergic nerve terminals allows an objective and reproducible measurement of the nigrostriatal dopaminergic system. Available pre-synaptic radioligands selectively target the dopamine transporter (DAT), making this a biomarker of diseases involving the nigrostriatal pathway (class II evidence) [209]. All successful DAT-binding agents belong to a group of tropane derivatives, which share a similar backbone structure with cocaine. The first successful DAT imaging agent for SPECT was [<sup>123</sup>I]β-CIT, and the results reported in the early 1990s suggested a strong correlation between putaminal abnormalities and clinical symptoms of PD (class II evidence) [210]. Over time, several other tracers have been developed for this purpose. In recent years, [<sup>123</sup>I] fluopane (FP)-CIT was first registered in Europe (and later also in the USA) for the early diagnosis of parkinsonism and in the differential diagnosis from essential tremor (class I evidence) [211] (Fig. 6).

Dopamine transporter-SPECT cannot differentiate PD from APS (e.g. MSA or PSP) (class III evidence) [212], given a similar nigrostriatal involvement in these diseases. However, using an observer-independent software for statistical parametric mapping, reduced midbrain [<sup>123</sup>I]β-CIT uptake was found in patients with MSA-P and allowed a correct classification of 95% patients suffering from MSA-P or PD, respectively (class II evidence) [213]. DaTscan SPECT proves also useful in suspected neuroleptic-induced parkinsonism, as it can separate purely drug-induced cases (normal uptake) from those with concomitant dopaminergic degeneration (class II evidence) [214].

SPECT imaging of dopamine D2 receptors has no clinical value in confirming the diagnosis of PD. The main clinical application for post-synaptic SPECT imaging is the differential diagnosis of PD from APS. Nevertheless, [<sup>123</sup>I] IBZM SPECT cannot itself discriminate amongst different APS (class III evidence) [212].

Cerebral blood flow (CBF) and SPECT investigations may potentially clarify the neural substrates of motor and cognitive symptoms, as well as chronic

**Table 3** Findings with quantitative imaging techniques implemented on 3-T MR systems in PD

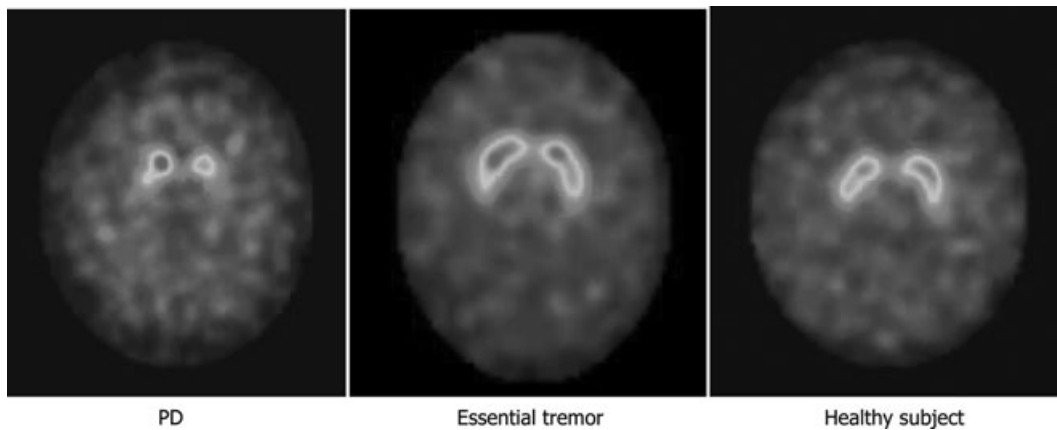
Author, year (reference)	Cohort size (mean age, mean disease duration, range disease duration)/design	MRI Methodology	Marker	Sensitivity (%)	Specificity (%)
Vaillancourt 2009 [204]	<ul style="list-style-type: none"> <li>• PD 14 de novo untreated with H&amp;Y 1-2 (57y, 16m, 433 m)/controls 14 (58y)</li> <li>• Prospective blinded analysis</li> </ul>	DTI of the SN (subregions)	Decreased FA in caudal SN Decreased FA in middle SN Decreased FA in rostral SN	100 100 100	100 35 7
Menke 2009 [205]	<ul style="list-style-type: none"> <li>• PD 10 with H&amp;Y 1-3 (64y, 6y, 1-14y)/controls 10 (64y)</li> <li>• Prospective blinded analysis</li> </ul>	Combined SN volumetry with DTI of SN ( <sup>a</sup> VCDR)	Decreased SN volume Decreased VCDR <sup>b</sup> Decreased SN volume + decreased VCDR	80 100 100	70 70 80
Gröger 2011 [206]	<ul style="list-style-type: none"> <li>• PD 9 with H&amp;Y 2,5-3, all medicated (69y, n.g., 4-25y)/controls 8 (66y)</li> <li>• Prospective blinded analysis</li> </ul>	3D-MRSI of the SN	Decreased NAA/Cr ratio of rostral SN Increased NAA/Cr ratio of caudal SN Decreased rostral-to-caudal ratios of the NAA/Cr ratio	89 89 100	50 75 100
Peran 2010 [207]	<ul style="list-style-type: none"> <li>• PD 30 with H&amp;Y 1-2, all medicated (62y, 4.5y, n.g.)/controls 22 (57y)</li> <li>• Prospective blinded analysis</li> </ul>	Multimodal study using a combination of different MR markers including volumetry, mean R <sup>b</sup> , mean diffusivity and FA applied in 6 deep grey matter structures (SN, RN thalamus, putamen, caudate and pallidum)	Increased R <sup>2</sup> <sup>b</sup> in the substantia nigra, reduced FA in the substantia nigra and increased mean diffusivity in the putamen or caudate nucleus	Discriminant power <sup>c</sup> : • 71-83% in considering only one marker • 95-98% in considering the three-marker combinations	
Meizer 2011 [208]	<ul style="list-style-type: none"> <li>• PD 61 with 26 drug-naïve (cognitively normal <i>n</i> = 34: 65y, 3y; with mild cognitive impairment <i>n</i> = 16: 70y, 9y; with dementia, <i>n</i> = 11: 75y, 12y)/controls 29 (69y)</li> <li>• Prospective blinded analysis</li> </ul>	Perfusion imaging study with arterial spin labelling	PD-related perfusion network by principal component analysis	AUC of ROC <sup>2</sup> : • Controls versus PD 0.71 • Controls versus PD + MCI 0.94 • Controls versus PDD 0.99 • De novo patients not analysed	

PD, Parkinson's disease; PDD, PD dementia; SN, substantia nigra; RN, red nucleus; DTI, diffusion tensor imaging; 3D-MRSI, three-dimensional magnetic resonance spectroscopic imaging; R<sup>2</sup><sup>b</sup>, relaxation rates = 1/T<sup>2</sup><sup>b</sup>; FA, fractional anisotropy; ASL, arterial spin labelling; AUC, area under the curve; ROC, receiver operating characteristic analysis; n.g. not given.

<sup>a</sup>VCDR is a DTI marker representing the numbers of voxels for all connectivity-defined subregions within the SN thresholded at 10% of the maximum connection probability.

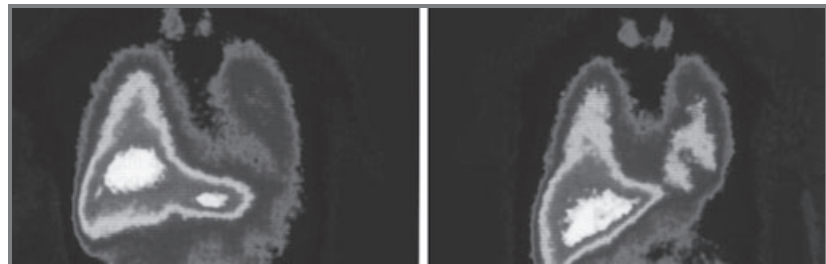
<sup>b</sup>Reduced left and right SN to ipsilateral thalamus VCDRs.

<sup>c</sup>Sensitivity, specificity not given.



**Figure 6** Dopamine transporter SCAN imaging of a patient with Parkinson's disease (PD), an essential tremor patient and an healthy subject. Courtesy of Eveline Donnemiller, Department of Nuclear Medicine, Medical University Innsbruck.

**Figure 7** Metaiodobenzylguanidine (MIBG) uptake in Parkinson's disease (PD) (left) and multiple system atrophy (MSA) (right). Please note normal heart uptake in the MSA patient. The structure showing extensive uptake in both patients is the liver.



medication effects in PD (class III evidence) [215]. Specific CBF decrements have been shown in PDD patients (mostly in the parietal and occipital cortex class III evidence) [216], PSP (mostly frontal lobe) as well as MSA (striatum, class II evidence) [217].

Interest has recently developed also on the use of MIBG, an analogue of norepinephrine. MIBG can be labelled with  $^{123}\text{I}$  ( $^{123}\text{I}$  MIBG). MIBG is actively uptaken from cardiac adrenergic fibres by the sodium- and energy-dependent human norepinephrine transporter. It is afterwards secreted after cholinergic pre-ganglionic stimulation. Thus,  $^{123}\text{I}$  MIBG traces not only the localization, but also the functional integrity of catecholaminergic nerve endings.

Atypical parkinsonian syndromes and vascular parkinsonism usually show normal or only mild reduction in cardiac  $^{123}\text{I}$  MIBG uptake in contrast with PD, where  $^{123}\text{I}$  MIBG uptake is significantly reduced or absent (class II evidence; Fig. 7) [218]. The main drawback of  $^{123}\text{I}$  MIBG/SPECT is a low specificity (37.4%), whilst its sensitivity is relatively high (87.7%) (class II evidence) [219]. One study directly compared  $^{123}\text{I}$  MIBG with  $^{123}\text{I}$ FP-CIT in PD subjects (Hoehn and Yahr stage 1) showing higher sensitivity for  $^{123}\text{I}$ FP-CIT (83% vs. 72%) (class II evidence) [220].

## Recommendations

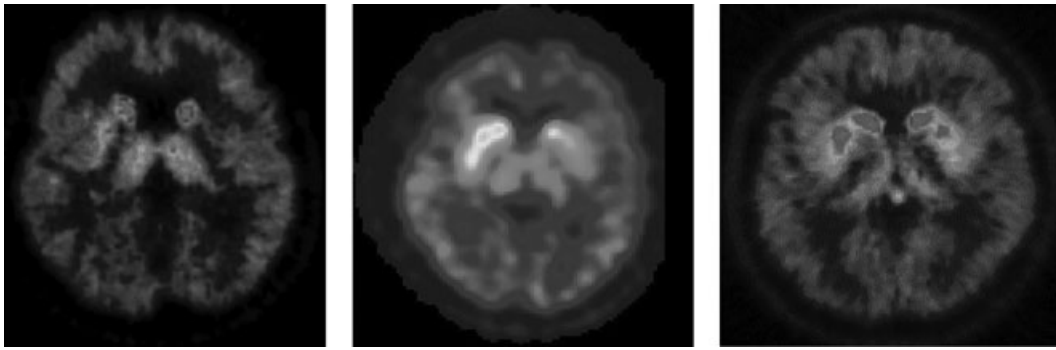
DaTscan-SPECT is registered in Europe and the United States for the differential diagnosis between degenerative parkinsonism and essential tremor (Level A). More specifically, DaTscan SPECT is indicated in the presence of significant diagnostic uncertainty and particularly in patients presenting atypical tremor manifestations. Cardiac  $^{123}\text{I}$  MIBG/SPECT imaging may assist in the differential diagnosis of PD versus APS (Level A).

All other SPECT imaging studies do not fulfil registration standards and cannot be recommended for routine clinical use.

## Positron emission tomography

Positron emission tomography (PET) has been used in two main ways to support a diagnosis of PD. The first is via detection of striatal dopamine deficiency (SDD) state associated with degenerative parkinsonian syndromes including PD, MSA, PSP and CBD and differentiating these latter from essential and dystonic tremors, drug-induced and psychogenic parkinsonism [221]. Tracers useful for this purpose include  $^{18}\text{F}$ -dopa – a marker of dopa decarboxylase activity in the





**Figure 8** Images of striatal  $^{11}\text{C}$ -RTI-32 positron emission tomography (PET) dopamine transporter (DAT),  $^{11}\text{C}$ -DTBZ PET (VMAT2) and  $^{18}\text{F}$ -dopa PET (dopa decarboxylase) uptake in healthy volunteers and early Parkinson's disease (PD). It can be seen that the three PET imaging modalities all show asymmetrically reduced posterior putamen dopaminergic function in PD.

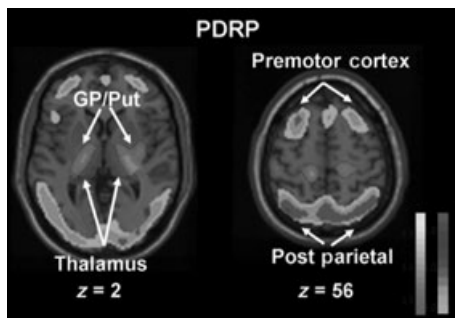
dopaminergic terminal [222],  $^{11}\text{C}$ - and  $^{18}\text{F}$ -dihydrotetrahydrozoline (DTBZ) – both markers of monoamine vesicular transporter binding [223,224], and  $^{11}\text{C}$ -methylphenidate [225],  $^{18}\text{F}$ -CFT [226],  $^{11}\text{C}$ -RTI-32 [227] and  $^{18}\text{F}$ -FP-CIT [228] – all markers of DAT availability (Fig. 8). It has been demonstrated that levels of SDD correlate well with locomotor disability [229] and progression of disease can be detected in longitudinal studies [226,230,231]. Additionally, pre-motor SDD can be detected in some adult subjects at risk for PD, such as LRRK2 gene carriers [232], asymptomatic relatives of familial PD cases [233] and homozygous twins [234].

Whilst these PET tracers have high sensitivity for detecting SDD, they do not reliably discriminate between parkinsonian syndromes, although PD is associated with a rostro-caudal putamen gradient of dopamine dysfunction compared with the more uniform dysfunction evident in PSP and CBD [235]. In PD, putamen dopamine D2 receptor availability is

preserved or even mildly increased in de novo cases. This can be demonstrated with PET benzamide tracers such as  $^{11}\text{C}$ -raclopride [236]. In contrast, striatal D2 binding is reduced in MSA, PSP and CBD, although significant decreases are only present in around 50% of individuals [237,238].

The second approach involves  $^{18}\text{F}$ -FDG PET which allows the patterns of resting brain glucose metabolism (rCMRGlc) to be determined. In PD, covariance analysis reveals a characteristic profile where lentiform rCMRGlc is relatively increased and frontal rCMRGlc lowered. This has been indicated as the PD-related profile (PDRP; Fig. 9) [239]. The PDRP correlates with locomotor disability when patients are temporarily withdrawn from medication and can be normalized by the treatment with dopaminergic agents [240]. In contrast, APS characteristically show reduced striatal rCMRGlc and can be sensitively discriminated from typical PD [241]. It may also be possible to discriminate between the atypical syndromes by the patterns of brainstem and cortical involvement [242].

In summary, PET imaging cannot directly diagnose PD or APS. The patterns of dysfunction it reveals can help supporting or refuting clinical impressions. If neuroprotective or restorative therapies become available, PET can also reveal subclinical dysfunction in at-risk subjects for PD.



**Figure 9** Covariance analysis of FDG positron emission tomography (PET) showing the Parkinson's disease (PD)-related profile of raised lentiform and reduced frontal metabolism (Eidelberg 1990).

## Recommendations

None of the reviewed PET studies has been performed according to regulatory standards with the exception of the study by Whone *et al.* [230]. Therefore, we cannot make any formal recommendation for the routine use of PET studies in the diagnostic work-up of PD.

**Table 4** Tools for the diagnosis of Parkinson's disease. Recommendations of the EFNS/MDS-ES Task Force

Section	Recommendation level	Notes
<i>1. Clinical Diagnostic Criteria</i>		
1.1 QSBB clinical diagnostic criteria	B	Some <i>exclusion</i> and <i>supportive</i> criteria deserve future revision
<i>2. Genetic Testing</i>		
2.1 <i>SNCA</i> gene point mutations and multiplication	B	To be screened in PD families suggestive of dominant inheritance
2.2 <i>LRRK2</i> , known pathogenic variants	B	To be screened in: I. Typical PD cases with family history suggestive of dominant inheritance II. In sporadic PD cases from specific populations with known founder effect mutations
2.3 <i>GBA</i> mutations	B	Founder effect mutations to be searched in PD cases from specific populations (i.e. Ashkenazi Jewish) with or without positive family history
2.4 <i>parkin</i> , <i>PINK1</i> , <i>DJ-1</i> mutations	B	To be screened in: I. PD cases with disease onset <50 years of age and family history suggestive of recessive inheritance II. Sporadic PD cases with disease onset <40 years of age
2.5 <i>ATP13A2</i> , <i>PLA2G6</i> , <i>FBX07</i>	B	To be screened in very-early-onset PD cases with negative <i>parkin</i> , <i>PINK1</i> , <i>DJ-1</i> testing
3. <i>Autonomic function testing</i>	Insufficient evidence	
<i>4. Olfactory tests (UPSIT, Smell Test)</i>		
4.1 PD versus atypical and secondary parkinsonism	A	
4.2 Idiopathic PD versus recessive PD forms	A	
4.3 Pre-motor PD	A	To be used in conjunction with other screening tests
<i>5. Drug Challenge Test (L-Dopa, Apomorphine)</i>		
5.1 Diagnosis of de novo parkinsonian patients	Not recommended	
5.2 Differential diagnosis between PD and atypical parkinsonism	Insufficient evidence	
<i>6. Neurophysiological tests</i>		
6.1 EEG	Insufficient evidence	
6.2 Evoked Potentials	Insufficient evidence	
6.3 Sleep studies	Insufficient evidence	
6.4 Tremor analysis	Insufficient evidence	
6.5 EMG/ENG	Insufficient evidence	
<i>7. Neuropsychological tests</i>		
7.1 Initial evaluation of a suspected PD case	A	Evaluation should include: I. Collateral history from a carer II. Brief assessment of cognition screening for RBD, psychosis, severe depression
<i>8. Neuroimaging</i>		
8.1 Transcranial Sonography		
8.1.1 Differential diagnosis of PD from atypical and secondary parkinsonism	A	
8.1.2 Early diagnosis of PD	A	
8.1.3 Detection of subjects at risk for PD	A	To be used in conjunction with other screening tests
8.2 Magnetic Resonance Imaging (MRI)		
8.2.1 Conventional 1,5-T MRI-Differential diagnosis of MSA from PD: Putaminal atrophy Rim sign Pontocerebellar atrophy Middle cerebellar peduncle hyperintensity 'Hot cross bun' sign	A	

**Table 4** (Continued)

Section	Recommendation level	Notes
8.2.2 Conventional 1,5-T MRI-Differential diagnosis of PSP from PD: Midbrain atrophy Hummingbird sign	B	
8.2.3 Conventional 1,5-T MRI-Differential diagnosis of PSP from PD: Superior cerebellar peduncle atrophy	C	
8.2.4 1,5-T DWI-Differential diagnosis of MSA from PD: Putaminal diffusivity changes	A	
8.2.5 1,5-T DWI-Differential diagnosis of PSP from PD: Superior cerebellar peduncle diffusivity changes	B	
8.3 Single Photon Emission Tomography (SPECT)		
8.3.1 DAT Scan-Differential diagnosis of Essential Tremor from PD and atypical parkinsonism	A	Cost-effective investigation
8.3.2 <sup>123</sup> I-MIBG SPECT-Differential diagnosis of PD from MSA-P and controls	A	
8.4 Positron Emission Tomography (PET)	Insufficient evidence	

DAT, dopamine transporter; DWI, diffusion-weighted imaging; MIBG, metaiodobenzylguanidine; MSA, multiple system atrophy; PD, Parkinson's disease; PSP, progressive supranuclear palsy; QSBB, Queen Square Brain Bank; RBD, REM sleep behaviour disorder.

## Section 9: economic issues

Cost-effectiveness data are scarce in PD. Only <sup>123</sup>I-FP-CIT SPECT was assessed in three jurisdictions (Italy [243], Belgium [244] and Germany [245]). In all three publications, the authors came to the conclusion that <sup>123</sup>I-FP-CIT SPECT has to be regarded as cost-effective investigation for the differential diagnosis of essential tremor from parkinsonian disorders, if used as a confirmatory test in drug-naïve patients with a positive clinical examination. There are insufficient cost-effectiveness data for all the other diagnostic modalities reviewed in this statement. This is an area of unmet need deserving future investigations.

### Recommendations

None.

### Concluding remarks

The correct diagnosis of PD is important for prognostic and therapeutic reasons and is essential for clinical research. Increasing knowledge of the heterogeneous clinical presentation of parkinsonian syndromes has resulted in improved diagnostic accuracy. Recommendations of the EFNS/MDS-ES for the diagnosis of PD are summarized in Table 4. As to clinical diagnostic criteria, only the QSBB criteria have been fully validated, reaching class III evidence and a Level B

recommendation. Genetic testing, ranking a Level B recommendation, should be performed according to the clinical presentation including age at disease onset. It may identify a hereditary cause in parkinsonian subjects with a positive family history. Olfactory testing is a cheap and extensively validated tool that contributes to the early diagnosis of PD and also to its differential diagnosis (Level A). Recent evidence suggests that it may also serve as screening tool to identify patients with pre-motor PD. TCS of the SN is recommended for the early diagnosis of PD and its differential diagnosis from atypical parkinsonism (Level A). It may serve as screening tool for at-risk individuals in conjunction with other screening tests as well (Level A). Neuropsychological testing, functional and structural neuroimaging investigations should be primarily performed to exclude other causes of parkinsonism in patients with suspected PD (Level A). Further studies are needed for autonomic, drug challenge, neurophysiological testing and PET imaging in order to establish their role in the diagnosis of PD.

### Supporting Information

Additional Supporting Information may be found in the online version of this article:

**Data S1.** Clinical Diagnostic Criteria for Parkinson's Disease.

## References

- Schrag A, Ben-Shlomo Y, Quinn N. How valid is the clinical diagnosis of Parkinson's disease in the community? *J Neurol Neurosurg Psychiatry* 2002; **73**: 529–534.
- Tolosa E, Wenning G, Poewe W. The diagnosis of Parkinson's disease. *Lancet Neurol* 2006; **5**: 75–86.
- Brainin M, Barnes M, Baron J-C, et al. Guidance for the preparation of neurological management guidelines by EFNS Scientific Task Forces – revised recommendations 2004. *Eur J Neurol* 2004; **11**: 577–581.
- Gibb WR, Lees AJ. The relevance of the Lewy body to the pathogenesis of idiopathic Parkinson's disease. *J Neurol Neurosurg Psychiatry* 1988; **51**: 745–752.
- Abdo WF, van de Warrenburg BP, Burn DJ, Quinn NP, Bloem BR. The clinical approach to movement disorders. *Nat Rev Neurol* 2010; **6**: 29–37.
- Lees AJ, Hardy J, Revesz T. Parkinson's disease. *Lancet* 2009; **373**: 2055–2066.
- Hughes AJ, Daniel SE, Kilford L, Lees AJ. Accuracy of clinical diagnosis of idiopathic Parkinson's disease: a clinico-pathological study of 100 cases. *J Neurol Neurosurg Psychiatry* 1992; **55**: 181–184.
- Hughes AJ, Daniel SE, Ben Shlomo Y, Lees AJ. The accuracy of diagnosis of parkinsonian syndromes in a specialist movement disorder service. *Brain* 2002; **125**: 861–870.
- Meara J, Bhowmick BK, Hobson P. Accuracy of diagnosis in patients with presumed Parkinson's disease. *Age Ageing* 1999; **28**: 99–102.
- Jankovic J, Rajput AH, Medermott MP, Perl DP. The evolution of diagnosis in early Parkinson disease. Parkinson Study Group. *Arch Neurol* 2000; **57**: 369–372.
- Lees AJ, Katzschlager R, Head J, Ben-Shlomo Y. Ten-year follow-up of three different initial treatments in de-novo PD: a randomized trial. *Neurology* 2001; **57**: 1687–1694.
- Harbo HF, Finsterer J, Baets J, et al. EFNS guidelines on the molecular diagnosis of neurogenetic disorders: general issues, Huntington's disease, Parkinson's disease and dystonias. *Eur J Neurol* 2009; **16**: 777–785. Erratum in: *Eur J Neurol* 2010; **17**: 339.
- Gasser T. Molecular pathogenesis of Parkinson disease: insights from genetic studies. *Expert Rev Mol Med* 2009; **11**: e22.
- Zarranz JJ, Alegre J, Gomez-Esteban JC, et al. The new mutation, E46K, of alpha-synuclein causes Parkinson and Lewy body dementia. *Ann Neurol* 2004; **55**: 164–173.
- Ahn TB, Kim SY, Kim JY, et al. Alpha-Synuclein gene duplication is present in sporadic Parkinson disease. *Neurology* 2008; **70**: 43–49.
- Di Fonzo A, Tassorelli C, De Mari M, et al. Comprehensive analysis of the LRRK2 gene in sixty families with Parkinson's disease. *Eur J Hum Genet* 2006; **14**: 322–331.
- Gilks WP, Abou-Sleiman PM, Gandhi S, et al. A common LRRK2 mutation in idiopathic Parkinson's disease. *Lancet* 2005; **365**: 415–416.
- Ozelius LJ, Senthil G, Saunders-Pullman R, et al. LRRK2 G2019S as a cause of Parkinson's disease in Ashkenazi Jews. *N Engl J Med* 2006; **354**: 424–425.
- Simon-Sanchez J, Marti-Masso JF, Sanchez-Mut JV, et al. Parkinson's disease due to the R1441G mutation in Dardarin: a founder effect in the Basques. *Mov Disord* 2006; **21**: 1954–1959.
- Sidransky E, Nalls MA, Aasly JO, et al. Multicenter analysis of glucocerebrosidase mutations in Parkinson's disease. *N Engl J Med* 2009; **361**: 1651–1661.
- Mitsui J, Mizuta I, Toyoda A, et al. Mutations for Gaucher disease confer high susceptibility to Parkinson disease. *Arch Neurol* 2009; **66**: 571–576.
- Lesage S, Anheim M, Condroyer C, et al. Large-scale screening of the Gaucher's disease-related glucocerebrosidase gene in Europeans with Parkinson's disease. *Hum Mol Genet* 2011; **20**: 202–210.
- Lucking CB, Durr A, Bonifati V, et al. Association between early-onset Parkinson's disease and mutations in the parkin gene. *N Engl J Med* 2000; **342**: 1560–1567.
- Kay DM, Stevens CF, Hamza TH, et al. A comprehensive analysis of deletions, duplications, and copy number variations in PARK2. *Neurology* 2010; **75**: 1189–1194.
- Lohmann E, Periquet M, Bonifati V, et al. How much phenotypic variation can be attributed to parkin genotype? *Ann Neurol* 2003; **54**: 176–185.
- Holmberg B, Kallio M, Johnels B, Elam M. Cardiovascular reflex testing contributes to clinical evaluation and differential diagnosis of Parkinsonian syndromes. *Mov Disord* 2001; **16**: 217–225.
- Bordet R, Benhadjali J, Destee A, Hurtevent JF, Bourriez JL, Guieu JD. Sympathetic skin response and R-R interval variability in multiple system atrophy and idiopathic Parkinson's disease. *Mov Disord* 1996; **11**: 268–272.
- De Marinis M, Stocchi F, Gregori B, Accornero N. Sympathetic skin response and cardiovascular autonomic function tests in Parkinson's disease and multiple system atrophy with autonomic failure. *Mov Disord* 2000; **15**: 1215–1220.
- Stocchi F, Carbone A, Inghilleri M, et al. Urodynamic and neurophysiological evaluation in Parkinson's disease and multiple system atrophy. *J Neurol Neurosurg Psychiatry* 1997; **62**: 507–511.
- Sakakibara R, Hattori T, Uchiyama T, Yamanishi T. Videourodynamic and sphincter motor unit potential analyses in Parkinson's disease and multiple system atrophy. *J Neurol Neurosurg Psychiatry* 2001; **71**: 600–606.
- Bonnet AM, Pichon J, Vidailhet M, et al. Urinary disturbances in striatonigral degeneration and Parkinson's disease: clinical and urodynamic aspects. *Mov Disord* 1997; **12**: 509–513.
- Stocchi F, Badiali D, Vacca L, et al. Anorectal function in multiple system atrophy and Parkinson's disease. *Mov Disord* 2000; **15**: 71–76.
- Klein C, Brown R, Wenning G, Quinn N. The “cold hands sign” in multiple system atrophy. *Mov Disord* 1997; **12**: 514–518.
- Pierangeli G, Provini F, Maltoni P, et al. Nocturnal body core temperature falls in Parkinson's disease but not in Multiple-System Atrophy. *Mov Disord* 2001; **16**: 226–232.
- Riley DE, Chelmsky TC. Autonomic nervous system testing may not distinguish multiple system atrophy from Parkinson's disease. *J Neurol Neurosurg Psychiatry* 2003; **74**: 56–60.

36. Reimann M, Schmidt C, Herting B, *et al.* Comprehensive autonomic assessment does not differentiate between Parkinson's disease, multiple system atrophy and progressive supranuclear palsy. *J Neural Transm* 2010; **117**: 69–76.
37. Hahn K, Ebersbach G. Sonographic assessment of urinary retention in multiple system atrophy and idiopathic Parkinson's disease. *Mov Disord* 2005; **20**: 1499–1502.
38. Lipp A, Sandroni P, Ahlskog JE, *et al.* Prospective differentiation of multiple system atrophy from Parkinson disease, with and without autonomic failure. *Arch Neurol* 2009; **66**: 742–750.
39. Pietzarka K, Reimann M, Schmidt C, *et al.* The cold hand sign in multiple system atrophy: skin perfusion revisited. *J Neural Transm* 2010; **117**: 475–479.
40. Doty RL, Deems DA, Stellar S. Olfactory dysfunction in Parkinsonism: a general deficit unrelated to neurological signs, disease stage, or disease duration. *Neurology* 1988; **38**: 1237–1244.
41. Doty RL, Stern MB, Pfeiffer C, *et al.* Bilateral olfactory dysfunction in early stage treated and untreated idiopathic Parkinson's disease. *J Neurol Neurosurg Psychiatry* 1992; **55**: 138–142.
42. Hawkes CH, Shepard BC. Olfactory dysfunction Parkinson's disease. *J Neurol Neurosurg Psychiatry* 1997; **62**: 436–446.
43. Boesveldt S, Verbaan D, Knol DL, *et al.* A comparative study of odour and odour discrimination deficit in Parkinson's disease. *Mov Disord* 2008; **23**: 1984–1990.
44. Haehner A, Boesveldt S, Berendse HW, *et al.* Prevalence of smell loss in Parkinson's disease – a multicenter study. *Parkinsonism Relat Disord* 2008; **23**: 1984–1990.
45. Muller A, Reihman H, Livermore A, Hummel T. Olfactory function in idiopathic Parkinson's disease: results from cross-sectional studies in IPD patients and long-term follow-up of de-novo IPD patients. *J Neural Transm* 2002; **109**: 805–811.
46. Wenning GK, Shepard B, Hawkes C, *et al.* Olfactory function in atypical parkinsonian syndromes. *Acta Neurol Scand* 1995; **91**: 247–250.
47. Berendse HW, Ponsen MM diagnosing premotor Parkinson's disease using a two-step approach combining olfactory testing and DAT SPECT imaging. *Parkinsonism Relat Disord* 2009; **15**(3): S26–S30.
48. Katzenschlager R, Zijlmans J, Evans A, *et al.* Olfactory function distinguishes vascular parkinsonism from Parkinson's disease. *J Neurol Neurosurg Psychiatry* 2004; **75**: 1749–1752.
49. Lee PH, Yeo SH, Young SW, *et al.* Odour identification test and its relation to cardiac 123 I meta-iodobenzylguanidine in patients with drug induced parkinsonism. *J Neurol Neurosurg Psychiatry* 2007; **78**: 1250–1252.
50. Kertelge L, Bruggemann N, Schmidt A, *et al.* Impaired sense of smell and color discrimination in monogenic and idiopathic Parkinson's disease. *Mov Disord* 2010; **25**: 2665–2669.
51. Alcalay RN, Siderowf A, Ottman R, *et al.* Olfaction in Parkin heterozygotes and compound heterozygotes: the CORE-PD study. *Neurology* 2011; **76**: 319–326.
52. Ross GW, Petrovitch H, Abbott RD, *et al.* Association of olfactory with risk for future Parkinson's disease. *Ann Neurol* 2008; **63**: 167–173.
53. Langston JW. The Parkinson's complex: parkinsonism is just the tip of the iceberg. *Ann Neurol* 2006; **59**: 591–596.
54. Haehner A, Hummel T, Hummel C, *et al.* Olfactory loss may be a first sign of idiopathic Parkinson's disease. *Mov Disord* 2007; **22**: 839–842.
55. Berndse HW, Booij J, Chantal MJE, *et al.* Subclinical dopaminergic dysfunction in asymptomatic Parkinson's disease patients relatives with a decreased sense of smell. *Ann Neurol* 2001; **50**: 34–41.
56. Iijima M, Osawa M, Momose M. Cardiac sympathetic degeneration correlates with olfactory function in Parkinson's disease. *Mov Disord* 2010; **25**: 1143–1149.
57. Ponsen MM, Stoffers D, Booij J, *et al.* Idiopathic hyposmia as a preclinical sign of Parkinson's disease. *Ann Neurol* 2004; **56**: 173–181.
58. Ponsen MM, Stoffers D, Twisk WR, *et al.* Hyposmia and executive function as predictors of future Parkinson's disease: a prospective study. *Mov Disord* 2009; **24**: 1060–1065.
59. Ponsen MM, Stoffers D, Wolters ECh, *et al.* Olfactory testing combined with dopamine transporter imaging as a method to detect prodromal Parkinson's disease. *J Neurol Neurosurg Psychiatry* 2010; **81**: 396–399.
60. Esteguy M, Bonnet AM, Kefalos J, Lhermitte F, Agid Y. Le test a le levodopa dans la maladie de Parkinson. *Rev Neurol (Paris)* 1985; **141**(Suppl.): 413–414.
61. Barker R, Duncan J, Lees AJ. Subcutaneous apomorphine as a diagnostic test for dopaminergic responsiveness in parkinsonian syndromes. *Lancet* 1989; **1**: 675.
62. D'Costa DF, Abbott RJ, Pye IF, Millac PA. The apomorphine test in parkinsonian syndromes. *J Neurol Neurosurg Psychiatry* 1991; **54**: 870–872.
63. Hughes AJ, Lees AJ, Stern GM. Challenge tests to predict the dopaminergic response in untreated Parkinson's disease. *Neurology* 1991; **41**: 1723–1725.
64. Gasser T, Schwarz J, Arnold G, Trenkwalder C, Oertel WH. Apomorphine test for dopaminergic responsiveness in patients with previously untreated Parkinson's disease. *Arch Neurol* 1992; **49**: 1131–1134.
65. Clarke CE, Davies P. Systematic review of acute levodopa and apomorphine challenge tests in the diagnosis of idiopathic Parkinson's disease. *J Neurol Neurosurg Psychiatry* 2000; **69**: 590–594.
66. Albanese A, Bonuccelli U, Brefel C, *et al.* Consensus statement on the role of acute dopaminergic challenge in Parkinson's disease. *Mov Disord* 2001; **16**: 197–201.
67. Suchowersky O, Reich S, Perlmutter J, Zesiewicz T, Gronseth G, Weiner WJ. Practice parameter: diagnosis and prognosis of new onset Parkinson disease (an evidence-based review): report of the Quality Standards Subcommittee of the American Academy of Neurology Practice. *Neurology* 2006; **66**: 968–975.
68. Merello M, Nouzeilles MI, Arce GP, Leiguarda R. Accuracy of acute levodopa challenge for clinical prediction of sustained long-term levodopa response as a major criterion for idiopathic Parkinson's disease diagnosis. *Mov Disord* 2002; **17**: 795–798.
69. Rossi P, Colosimo C, Moro E, Tonali P, Albanese A. Acute challenge with apomorphine and levodopa in Parkinsonism. *Eur Neurol* 2000; **43**: 95–101.
70. Wenning GK, Litvan I, Verny M, *et al.* Is EEG useful in the differential diagnosis of parkinsonism? *Parkinsonism Relat Disord* 1998; **4**: 79–80.

71. Bonanni L, Thomas A, Tiraboschi P, Perfetti B, Varanese S, Onofrj M. EEG comparisons in early Alzheimer's disease, dementia with Lewy bodies and Parkinson's disease with dementia patients with a 2-year follow-up. *Brain* 2008; **131**: 690–705.
72. Wang L, Kuroiwa Y, Kamitani T, et al. Visual event-related potentials in progressive supranuclear palsy, corticobasal degeneration, striatonigral degeneration and Parkinson's disease. *J Neurol* 2000; **247**: 356–363.
73. Nightingale S, Mitchell KW, Howe JW. Visual evoked cortical potentials and pattern electroretinograms in Parkinson's disease and control subjects. *J Neurol Neurosurg Psychiatry* 1986; **49**: 1280–1287.
74. Takeda M, Tachibana H, Okuda B, et al. Event-related potential and visual evoked potential in patients with Parkinson's disease. *Nihon Ronen Igakkai Zasshi* 1993; **30**: 363–368.
75. Okuda B, Tachibana H, Kawabata K, et al. Visual evoked potentials in Parkinson's disease: correlation of pattern VEPs abnormality with dementia. *Alzheimer Dis Assoc Disord* 1995; **9**: 68–72.
76. Rossini PM, Babiloni F, Bernardi G, et al. Abnormalities of short-latency somatosensory evoked potentials in parkinsonian patients. *Electroencephalogr Clin Neurophysiol* 1989; **74**: 277–289.
77. Garcia PA, Aminoff MJ, Goodin DS. The frontla N30 component of the median-derived SEP in patients with predominantly unilateral Parkinson's disease. *Neurology* 1995; **45**: 989–992.
78. Onofrj M, Fulgente T, Malatesta G, et al. The abnormality of N30 somatosensory evoked potential in idiopathic Parkinson's disease is unrelated to disease stage or clinical scores and insensitive to dopamine manipulations. *Mov Disord* 1995; **10**: 71–80.
79. Bostantjopoulou S, Katsarou Z, Zafiriou D, et al. Abnormality of N30 somatosensory evoked potentials in Parkinson's disease: a multidisciplinary approach. *Neurophysiol Clin* 2000; **30**: 368–376.
80. Rossini PM, Bassetti MA, Paqualetti P. Median nerve somatosensory evoked potentials. Apomorphine-induced transient potentiation of frontal components in Parkinson's disease and parkinsonism. *Electroencephalogr Clin Neurophysiol* 1995; **96**: 236–247.
81. Tinazzi M, Fiaschi A, Idone D, et al. Parkinson's disease and lower limb somatosensory evoked potentials: apomorphine-induced relief of the akinetic-rigid syndrome and vertex P37–N50 potentials. *J Neurol Sci* 1999; **164**: 163–171.
82. Defebvre L. Extrapyrmidal disorders: interest of myoclonus analysis. *Rev Neurol* 2007; **163**: 1115–1121.
83. Van de Wassenberg WJ, van der Hoeven JH, Leenders KL. 128-Channel somatosensory evoked potentials in the differential diagnosis of parkinsonian disorders. *Parkinsonism Relat Disord* 2009; **15**: 564–571.
84. Tachibana H, Takeda M, Sugita M. Short-latency somatosensory and brainstem auditory evoked potentials in patients with Parkinson's disease. *Int J Neurosci* 1989; **44**: 321–326 (class III study).
85. Kodama Y, Ieda T, Hirayama M, et al. Auditory brainstem responses in patients with autonomic failure with Parkinson's disease and multiple system atrophy. *J Auton Nerv Syst* 1999; **77**: 184–189 (class III study).
86. Laffront F, Agar N, Zuber M, et al. Auditory evoked responses (AER) and augmenting – reducing phenomenon in patients with progressive supranuclear palsy (PSP). *Neurophysiol Clin* 1991; **21**: 149–160 (class III study).
87. Tyvaert L, Cassim F, Derambure P, Lefebvre L. Neurophysiology of corticobasal degeneration. *Rev Neurol* 2007; **163**: 779–791 (review).
88. Cantello R, Gianelli M, Bettucci D, et al. Parkinson's disease rigidity: magnetic motor evoked potentials in small hand muscle. *Neurology* 1991; **41**: 1449–1456.
89. Priori A, Berardelli A, Inghilleri M, et al. Motor cortical inhibition and the dopaminergic system. Pharmacological changes in the silent period after transcranial brain stimulation in normal subjects, patients with Parkinson's disease and drug-induced parkinsonism. *Brain* 1994; **117**: 317–323.
90. Cantello R, Tarletti R, Civardi C. Transcranial magnetic stimulation and Parkinson's disease. *Brain Res Brain Res Rev* 2002; **38**: 309–327.
91. De Rosa A, Volpe G, Marcantonio L, et al. Neurophysiological evidence of corticospinal tract abnormality in patients with Parkin mutations. *J Neurol* 2006; **253**: 275–279.
92. Abbruzzese G, Marchese R, Trompetto C. Sensory and motor evoked potentials in multiple system atrophy: a comparative study with Parkinson's disease. *Mov Disord* 1997; **12**: 315–321.
93. Wenning GK, Smith SJ. Magnetic brain stimulation in multiple system atrophy. *Mov Disord* 1997; **12**: 452–453.
94. Morita Y, Osaki Y, Doi Y. Transcranial magnetic stimulation for differential diagnostics in patients with parkinsonism. *Acta Neurol Scand* 2008; **118**: 159–163.
95. Vidailhet M, Rothwell JC, Thompson PD, Lees AJ, Marsden CD. The auditory startle response in the Steele-Richardson-Olszewski syndrome and Parkinson's disease. *Brain* 1992; **115**: 1181–1192.
96. Kofler M, Müller J, Wenning GK, et al. The auditory startle reaction in parkinsonian disorders. *Mov Disord* 2001; **16**: 62–71.
97. Plazzi G, Corsini R, Provini F, et al. REM sleep behavior disorders in multiple system atrophy. *Neurology* 1997; **48**: 1094–1097.
98. Boeve BF, Silber MH, Ferman TJ, Lucas JA, Parisi JE. Association of REM sleep behavior disorder and neurodegenerative disease may reflect an underlying synucleinopathy. *Mov Disord* 2001; **16**: 622–630.
99. Menza M, Dobkin RD, Marin H, Bienfait K. Sleep disturbances in Parkinson's disease. *Mov Disord* 2010; **25**(Suppl. 1): S117–S122.
100. Moreno-Lopez C, Santamaria J, Salamero M, Del Sorbo F, Albanese A, et al. Excessive daytime sleepiness in multiple system atrophy (SLEEMSA study). *Arch Neurol* 2011; **68**: 223–230.
101. Schulte EC, Winkelmann J. When Parkinson's disease patients go to sleep: specific sleep disturbances related to Parkinson's disease. *J Neurol* 2011; **258**(Suppl. 2): S328–S335.
102. Deuschl G, Krack P, Lauk M, et al. Clinical neurophysiology of tremor. *J Clin Neurophysiol* 1996; **13**: 110–121.
103. Deuschl G. Differential diagnosis of tremor. *J Neural Transm Suppl* 1999; **56**: 211–220.
104. Milanov I. Electromyographic differentiation of tremors. *Clin Neurophysiol* 2001; **112**: 1626–1632.

105. Breit S, Spieker S, Schulz JB, *et al.* Long-term EMG recordings differentiate between parkinsonian and Essentials tremor. *J Neurol* 2008; **255**: 103–111.
106. Eardley I, Quinn NP, Fowler CJ, *et al.* The value of urethral sphincter electromyography in the differential diagnosis of parkinsonism. *Br J Urol* 1989; **64**: 360–362.
107. Pramstaller PP, Wenning GK, Smith SJ, Beck RO, Quinn NP, Fowler J. Nerve conduction studies, skeletal muscle EMG, and sphincter EMG in multiple system atrophy. *J Neurol Neurosurg Psychiatry* 1995; **58**: 618–621.
108. Winge K, Jennum P, Lokkegaard A, *et al.* Anal sphincter EMG in the diagnosis of parkinsonian syndromes. *Acta Neurol Scand* 2010; **121**: 198–203.
109. McKeith I, Dickson D, Lowe J, *et al.* Diagnosis and management of dementia with Lewy bodies: third report of the DLB Consortium. *Neurology* 2005; **65**: 1863–1872.
110. Litvan I, Bhatia KP, Burn DJ, *et al.* SIC task force appraisal of clinical diagnostic criteria for parkinsonian disorders. *Mov Disord* 2003; **18**: 467–486.
111. Aarsland D, Bronnick K, Williams-Gray C, *et al.* Mild cognitive impairment in Parkinson disease: a multicenter pooled analysis. *Neurology* 2010; **75**: 1062–1069.
112. Llebaria G, Pagonabarraga J, Kulisevsky J, *et al.* Cut-off score of the Mattis Dementia Rating Scale for screening dementia in Parkinson's disease. *Mov Disord* 2008; **23**: 1546–1550.
113. Aarsland D, Litvan I, Salmon D, Galakso D, Wentzel-Larsen T, Larsen JP. Performance on the dementia rating scale in Parkinson's disease with dementia and dementia with Lewy bodies: comparison with progressive supranuclear palsy and Alzheimer's disease. *J Neurol Neurosurg Psychiatry* 2003; **74**: 1215–1220.
114. Mioshi E, Dawson K, Mitchell J, Arnold R, Hodges JR. The Addenbrooke's Cognitive Examination Revised (ACE-R): a brief cognitive test battery for dementia screening. *Int J Geriatr Psychiatry* 2006; **21**: 1078–1085.
115. Bak TH, Mioshi E. A cognitive bedside assessment beyond the MMSE: the Addenbrooke's Cognitive Examination. *Pract Neurol* 2007; **7**: 245–249.
116. Hoops S, Nazem S, Siderowf AD, *et al.* Validity of the MoCA and MMSE in the detection of MCI and dementia in Parkinson disease. *Neurology* 2009; **73**: 1738–1745.
117. Dalrymple-Alford JC, MacAskill MR, Nakas CT, *et al.* The MoCA: well-suited screen for cognitive impairment in Parkinson disease. *Neurology* 2010; **75**: 1717–1725.
118. Marinus J, Visser M, Verwey NA, *et al.* Assessment of cognition in Parkinson's disease. *Neurology* 2003; **61**: 1222–1228.
119. Pagonabarraga J, Kulisevsky J, Llebaria G, Garcia-Sanchez C, Pascual-Sedano B, Gironell A. Parkinson's disease-cognitive rating scale: a new cognitive scale specific for Parkinson's disease. *Mov Disord* 2008; **23**: 998–1005.
120. Kulisevsky J, Pagonabarraga J. Cognitive impairment in Parkinson's disease: tools for diagnosis and assessment. *Mov Disord* 2009; **24**: 1103–1110.
121. Williams-Gray CH, Evans JR, Goris A, *et al.* The distinct cognitive syndromes of Parkinson's disease: 5 year follow-up of the CamPaIGN cohort. *Brain* 2009; **132**: 2958–2969.
122. Dujardin K, Dubois B, Tison F, *et al.* Parkinson's disease dementia can be easily detected in routine clinical practice. *Mov Disord* 2010; **25**: 2769–2776.
123. Pagonabarraga J, Kulisevsky J, Llebaria G, *et al.* PDD-Short Screen: a brief cognitive test for screening dementia in Parkinson's disease. *Mov Disord* 2010; **25**: 440–446.
124. Stiasny-Kolster K, Mayer G, Schafer S, Carsten Moller J, Heinzel-Gutenbrunner M, Oertel WH. The REM sleep behavior disorder screening questionnaire: a new diagnostic instrument. *Mov Disord* 2007; **22**: 2386–2393.
125. Goetz CG, Tilley BC, Shaftman SR, *et al.* Movement Disorder Society-sponsored revision of the Unified Parkinson's Disease Rating Scale (MDS-UPDRS): scale presentation and clinimetric testing results. *Mov Disord* 2008; **23**: 2129–2170.
126. Berg D, Siefker C, Becker G. Echogenicity of the substantia nigra in Parkinson's disease and its relation to clinical findings. *J Neurol* 2001; **248**: 684–689.
127. Walter U, Wittstock M, Benecke R, Dressler D. Substantia nigra echogenicity is normal in non-extrapyramidal cerebral disorders but increased in Parkinson's disease. *J Neural Transm* 2002; **109**: 191–196.
128. Huang YW, Jeng JS, Tsai CF, Chen LL, Wu RM. Transcranial imaging of substantia nigra hyperechogenicity in a Taiwanese cohort of Parkinson's disease. *Mov Disord* 2007; **22**: 550–555.
129. Kim JY, Kim ST, Jeon SH, Lee WY. Midbrain transcranial sonography in Korean patients with Parkinson's disease. *Mov Disord* 2007; **22**: 1922–1926.
130. Okawa M, Miwa H, Kajimoto Y, *et al.* Transcranial sonography of the substantia nigra in Japanese patients with Parkinson's disease or atypical parkinsonism: clinical potential and limitations. *Intern Med* 2007; **46**: 1527–1531.
131. Ressler P, Skoloudik D, Hlustik P, Kanovsky P. Hyperechogenicity of the substantia nigra in Parkinson's disease. *J Neuroimaging* 2007; **17**: 164–167.
132. Tsai CF, Wu RM, Huang YW, Chen LL, Yip PK, Jeng JS. Transcranial color-coded sonography helps differentiation between idiopathic Parkinson's disease and vascular parkinsonism. *J Neurol* 2007; **254**: 501–507.
133. Mijajlovic M, Dragasevic N, Stefanova E, Petrovic I, Svetel M, Kostic VS. Transcranial sonography in spinocerebellar ataxia type 2. *J Neurol* 2008; **255**: 1164–1167.
134. Budisic M, Trkanjec Z, Bosnjak J, Lovrencic-Huzjan A, Vukovic V, Demarin V. Distinguishing Parkinson's disease and essential tremor with transcranial sonography. *Acta Neurol Scand* 2009; **119**: 17–21.
135. Berg D, Behnke S, Walter U. Application of transcranial sonography in extrapyramidal disorders: updated recommendations. *Ultraschall Med* 2006; **27**: 12–19.
136. Walter U, Behnke S, Eyding J, *et al.* Transcranial brain parenchyma sonography in movement disorders: state of the art. *Ultrasound Med Biol* 2007; **33**: 15–25.
137. Berg D, Godau J, Walter U. Transcranial sonography in movement disorders. *Lancet Neurol* 2008; **7**: 1044–1055.
138. Skoloudik D, Walter U. Method and validity of transcranial sonography in movement disorders. *Int Rev Neurobiol* 2010; **90**: 7–34.
139. Walter U, Kanowski M, Kaufmann J, Grossmann A, Benecke R, Niehaus L. Contemporary ultrasound sys-

- tems allow high-resolution transcranial imaging of small echogenic deep intracranial structures similarly as MRI: a phantom study. *Neuroimage* 2008; **40**: 551–558.
140. van de Loo S, Walter U, Behnke S, *et al.* Reproducibility and diagnostic accuracy of substantia nigra sonography for the diagnosis of Parkinson's disease. *J Neurol Neurosurg Psychiatry* 2010; **81**: 1087–1092.
  141. Berg D. Hyperechogenicity of the substantia nigra: pitfalls in assessment and specificity for Parkinson's disease. *J Neural Transm* 2010; **118**: 453–461.
  142. Walter U, Dressler D, Probst T, *et al.* Transcranial brain sonography findings in discriminating between parkinsonism and idiopathic Parkinson Disease. *Arch Neurol* 2007; **64**: 1635–1640.
  143. Gaenslen A, Unmuth B, Godau J, *et al.* The specificity and sensitivity of transcranial ultrasound in the differential diagnosis of Parkinson's disease: a prospective blinded study. *Lancet Neurol* 2008; **7**: 417–424.
  144. Walter U, Klein C, Hilker R, Benecke R, Pramstaller PP, Dressler D. Brain parenchyma sonography detects preclinical parkinsonism. *Mov Disord* 2004; **19**: 1445–1449.
  145. Berg D, Schweitzer K, Leitner P, *et al.* Type and frequency of mutations in the LRRK2 gene in familial and sporadic Parkinson's disease\*. *Brain* 2005; **128**: 3000–3011.
  146. Hedrich K, Winkler S, Hagenah J, *et al.* Recurrent LRRK2 (Park8) mutations in early-onset Parkinson's disease. *Mov Disord* 2006; **21**: 1506–1510.
  147. Hagenah JM, Konig IR, Becker B, *et al.* Substantia nigra hyperechogenicity correlates with clinical status and number of Parkin mutated alleles. *J Neurol* 2007; **254**: 1407–1413.
  148. Schweitzer KJ, Brussel T, Leitner P, *et al.* Transcranial ultrasound in different monogenetic subtypes of Parkinson's disease. *J Neurol* 2007; **254**: 613–616.
  149. Hagenah JM, Becker B, Bruggemann N, *et al.* Transcranial sonography findings in a large family with homozygous and heterozygous PINK1 mutations. *J Neurol Neurosurg Psychiatry* 2008; **79**: 1071–1074.
  150. Brockmann K, Hagenah J. TCS in monogenic forms of Parkinson's disease. *Int Rev Neurobiol* 2010; **90**: 157–164.
  151. Berg D, Becker G, Zeiler B, *et al.* Vulnerability of the nigrostriatal system as detected by transcranial ultrasound. *Neurology* 1999; **53**: 1026–1031.
  152. Berg D, Roggendorf W, Schroder U, *et al.* Echogenicity of the substantia nigra: association with increased iron content and marker for susceptibility to nigrostriatal injury. *Arch Neurol* 2002; **59**: 999–1005.
  153. Postert T, Eyding J, Berg D, *et al.* Transcranial sonography in spinocerebellar ataxia type 3. *J Neural Transm Suppl* 2004; **68**: 123–133.
  154. Lambeck J, Niesen W, Zucker B. Substantia nigra hyperechogenicity in Huntington's disease. *Akt Neurologie* 2008; **35**: 152 (abstract).
  155. Krogias C, Eyding J, Postert T. Transcranial sonography in Huntington's disease. *Int Rev Neurobiol* 2010; **90**: 237–257.
  156. Krogias C, Postert T, Eyding J. Transcranial sonography in ataxia. *Int Rev Neurobiol* 2010; **90**: 217–235.
  157. Walter U, Krolikowski K, Tarnacka B, Benecke R, Czlonkowska A, Dressler D. Sonographic detection of basal ganglia lesions in asymptomatic and symptomatic Wilson disease. *Neurology* 2005; **64**: 1726–1732.
  158. Walter U, Dressler D, Lindemann C, Slachevsky A, Miranda M. Transcranial sonography findings in welding-related Parkinsonism in comparison to Parkinson's disease. *Mov Disord* 2008; **23**: 141–145.
  159. Walter U. Transcranial sonography in brain disorders with trace metal accumulation. *Int Rev Neurobiol* 2010; **90**: 166–178.
  160. Walter U, Wagner S, Horowski S, Benecke R, Zettl UK. Transcranial brain sonography findings predict disease progression in multiple sclerosis. *Neurology* 2009; **73**: 1010–1017.
  161. Spiegel J, Hellwig D, Mollers MO, *et al.* Transcranial sonography and [123I]FP-CIT SPECT disclose complementary aspects of Parkinson's disease. *Brain* 2006; **129**: 1188–1193.
  162. Berg D, Merz B, Reiners K, Naumann M, Becker G. Five-year follow-up study of hyperechogenicity of the substantia nigra in Parkinson's disease. *Mov Disord* 2005; **20**: 383–385.
  163. Behnke S, Double KL, Duma S, *et al.* Substantia nigra echomorphology in the healthy very old: correlation with motor slowing. *Neuroimage* 2007; **34**: 1054–1059.
  164. Mahlknecht P, Hotter A, Hussl A, Esterhammer R, Schocke M, Seppi K. Significance of MRI in diagnosis and differential diagnosis of Parkinson's disease. *Neurodegener Dis* 2010; **7**: 300–318.
  165. Schocke MF, Seppi K, Esterhammer R, *et al.* Diffusion-weighted MRI differentiates the Parkinson variant of multiple system atrophy from PD. *Neurology* 2002; **58**: 575–580.
  166. Ito S, Shirai W, Hattori T. Putaminal hyperintensity on T1-weighted MR imaging in patients with the Parkinson variant of multiple system atrophy. *AJNR Am J Neuroradiol* 2009; **30**: 689–692.
  167. Bhattacharya K, Saadia D, Eisenkraft B, *et al.* Brain magnetic resonance imaging in multiple-system atrophy and Parkinson disease: a diagnostic algorithm. *Arch Neurol* 2002; **59**: 835–842.
  168. Lee EA, Cho HI, Kim SS, Lee WY. Comparison of magnetic resonance imaging in subtypes of multiple system atrophy. *Parkinsonism Relat Disord* 2004; **10**: 363–368.
  169. Righini A, Antonini A, Ferrarini M, *et al.* Thin section MR study of the basal ganglia in the differential diagnosis between striatonigral degeneration and Parkinson disease. *J Comput Assist Tomogr* 2002; **26**: 266–271.
  170. Schrag A, Kingsley D, Phatouros C, *et al.* Clinical usefulness of magnetic resonance imaging in multiple system atrophy. *J Neurol Neurosurg Psychiatry* 1998; **65**: 65–71.
  171. Schrag A, Good CD, Miszkil K, *et al.* Differentiation of atypical parkinsonian syndromes with routine MRI. *Neurology* 2000; **54**: 697–702.
  172. Kraft E, Schwarz J, Trenkwalder C, Vogl T, Pfluger T, Oertel WH. The combination of hypointense and hyperintense signal changes on T2-weighted magnetic resonance imaging sequences: a specific marker of multiple system atrophy? *Arch Neurol* 1999; **56**: 225–228.
  173. Yekhlief F, Ballan G, Macia F, Delmer O, Sourgen C, Tison F. Routine MRI for the differential diagnosis of Parkinson's disease, MSA, PSP, and CBD. *J Neural Transm* 2003; **110**: 151–169.



174. Kraft E, Trenkwalder C, Auer DP. T2\*-weighted MRI differentiates multiple system atrophy from Parkinson's disease. *Neurology* 2002; **59**: 1265–1267.
175. Savoiardo M, Strada L, Girotti F, et al. MR imaging in progressive supranuclear palsy and Shy-Drager syndrome. *J Comput Assist Tomogr* 1989; **13**: 555–560.
176. Watanabe H, Saito Y, Terao S, et al. Progression and prognosis in multiple system atrophy: an analysis of 230 Japanese patients. *Brain* 2002; **125**: 1070–1083.
177. Ito S, Shirai W, Hattori T. Evaluating posterolateral linearization of the putaminal margin with magnetic resonance imaging to diagnose the Parkinson variant of multiple system atrophy. *Mov Disord* 2007; **22**: 578–581.
178. Paviour DC, Price SL, Stevens JM, Lees AJ, Fox NC. Quantitative MRI measurement of superior cerebellar peduncle in progressive supranuclear palsy. *Neurology* 2005; **64**: 675–679.
179. Oba H, Yagishita A, Terada H, et al. New and reliable MRI diagnosis for progressive supranuclear palsy. *Neurology* 2005; **64**: 2050–2055.
180. Kato N, Arai K, Hattori T. Study of the rostral midbrain atrophy in progressive supranuclear palsy. *J Neurol Sci* 2003; **210**: 57–60.
181. Graber JJ, Staudinger R. Teaching neuroimages: “Penguin” or “hummingbird” sign and midbrain atrophy in progressive supranuclear palsy. *Neurology* 2009; **72**: e81.
182. Barsottini OG, Ferraz HB, Maia AC Jr, Silva CJ, Rocha AJ. Differentiation of Parkinson's disease and progressive supranuclear palsy with magnetic resonance imaging: the first Brazilian experience. *Parkinsonism Relat Disord* 2007; **13**: 389–393.
183. Righini A, Antonini A, De NR, et al. MR imaging of the superior profile of the midbrain: differential diagnosis between progressive supranuclear palsy and Parkinson disease. *AJNR Am J Neuroradiol* 2004; **25**: 927–932.
184. Kataoka H, Tonomura Y, Taoka T, Ueno S. Signal changes of superior cerebellar peduncle on fluid-attenuated inversion recovery in progressive supranuclear palsy. *Parkinsonism Relat Disord* 2008; **14**: 63–65.
185. Schulz JB, Skalej M, Wedekind D, et al. Magnetic resonance imaging-based volumetry differentiates idiopathic Parkinson's syndrome from multiple system atrophy and progressive supranuclear palsy. *Ann Neurol* 1999; **45**: 65–74.
186. Groschel K, Hauser TK, Luft A, et al. Magnetic resonance imaging-based volumetry differentiates progressive supranuclear palsy from corticobasal degeneration. *Neuroimage* 2004; **21**: 714–724.
187. Hussl A, Mahlknecht P, Scherfler C, et al. Diagnostic accuracy of the magnetic resonance Parkinsonism index and the midbrain-to-pontine area ratio to differentiate progressive supranuclear palsy from Parkinson's disease and the Parkinson variant of multiple system atrophy. *Mov Disord* 2010; **25**: 2444–2449.
188. Nicoletti G, Fera F, Condino F, et al. MR imaging of middle cerebellar peduncle width: differentiation of multiple system atrophy from Parkinson disease. *Radiology* 2006; **239**: 825–830.
189. Quattrone A, Nicoletti G, Messina D, et al. MR imaging index for differentiation of progressive supranuclear palsy from Parkinson disease and the Parkinson variant of multiple system atrophy. *Radiology* 2008; **246**: 214–221.
190. Warmuth-Metz M, Naumann M, Csoti I, Solymosi L. Measurement of the midbrain diameter on routine magnetic resonance imaging: a simple and accurate method of differentiating between Parkinson disease and progressive supranuclear palsy. *Arch Neurol* 2001; **58**: 1076–1079.
191. Longoni G, Agosta F, Kostic VS, et al. MRI measurements of brainstem structures in patients with Richardson's syndrome, progressive supranuclear palsy-parkinsonism, and Parkinson's disease. *Mov Disord* 2011; **26**: 247–255.
192. Schocke MF, Seppi K, Esterhammer R, et al. Trace of diffusion tensor differentiates the Parkinson variant of multiple system atrophy and Parkinson's disease. *Neuroimage* 2004; **21**: 1443–1451.
193. Seppi K, Schocke MF, Esterhammer R, et al. Diffusion-weighted imaging discriminates progressive supranuclear palsy from PD, but not from the parkinson variant of multiple system atrophy. *Neurology* 2003; **60**: 922–927.
194. Seppi K, Schocke MF, Donnemiller E, et al. Comparison of diffusion-weighted imaging and [123I]IBZM-SPECT for the differentiation of patients with the Parkinson variant of multiple system atrophy from those with Parkinson's disease. *Mov Disord* 2004; **19**: 1438–1445.
195. Seppi K, Schocke MF, Prenschiuetz-Schuetzenau K, et al. Topography of putaminal degeneration in multiple system atrophy: a diffusion magnetic resonance study. *Mov Disord* 2006; **21**: 847–852.
196. Nicoletti G, Lodi R, Condino F, et al. Apparent diffusion coefficient measurements of the middle cerebellar peduncle differentiate the Parkinson variant of MSA from Parkinson's disease and progressive supranuclear palsy. *Brain* 2006; **129**: 2679–2687.
197. Kollensperger M, Seppi K, Liener C, et al. Diffusion weighted imaging best discriminates PD from MSA-P: a comparison with tilt table testing and heart MIBG scintigraphy. *Mov Disord* 2007; **22**: 1771–1776.
198. Pellecchia MT, Barone P, Mollica C, et al. Diffusion-weighted imaging in multiple system atrophy: a comparison between clinical subtypes. *Mov Disord* 2009; **24**: 689–696.
199. Rizzo G, Martinelli P, Manners D, et al. Diffusion-weighted brain imaging study of patients with clinical diagnosis of corticobasal degeneration, progressive supranuclear palsy and Parkinson's disease. *Brain* 2008; **131**: 2690–2700.
200. Paviour DC, Thornton JS, Lees AJ, Jager HR. Diffusion-weighted magnetic resonance imaging differentiates Parkinsonian variant of multiple-system atrophy from progressive supranuclear palsy. *Mov Disord* 2007; **22**: 68–74.
201. Blain CR, Barker GJ, Jarosz JM, et al. Measuring brain stem and cerebellar damage in parkinsonian syndromes using diffusion tensor MRI. *Neurology* 2006; **67**: 2199–2205.
202. Nicoletti G, Tonon C, Lodi R, et al. Apparent diffusion coefficient of the superior cerebellar peduncle differentiates progressive supranuclear palsy from Parkinson's disease. *Mov Disord* 2008; **23**: 2370–2376.
203. Ito M, Watanabe H, Kawai Y, et al. Usefulness of combined fractional anisotropy and apparent diffusion coefficient values for detection of involvement in multi-

- ple system atrophy. *J Neurol Neurosurg Psychiatry* 2007; **78**: 722–728.
204. Vaillancourt DE, Spraker MB, Prodoehl J, et al. High-resolution diffusion tensor imaging in the substantia nigra of de novo Parkinson disease. *Neurology* 2009; **72**: 1378–1384.
  205. Menke RA, Scholz J, Miller KL, et al. MRI characteristics of the substantia nigra in Parkinson's disease: a combined quantitative T1 and DTI study. *Neuroimage* 2009; **47**: 435–441.
  206. Groger A, Chadzynski G, Godau J, Berg D, Klose U. Three-dimensional magnetic resonance spectroscopic imaging in the substantia nigra of healthy controls and patients with Parkinson's disease. *Eur Radiol* 2011; **21**: 1962–1969.
  207. Peran P, Cherubini A, Assogna F, et al. Magnetic resonance imaging markers of Parkinson's disease nigrostriatal signature. *Brain* 2010; **133**: 3423–3433.
  208. Melzer TR, Watts R, MacAskill MR, et al. Arterial spin labelling reveals an abnormal cerebral perfusion pattern in Parkinson's disease. *Brain* 2011; **134**: 845–855.
  209. Antonini A. Imaging for early differential diagnosis of parkinsonism. *Lancet Neurol* 2010; **9**: 130–131.
  210. Scherfler C, Schwarz J, Antonini A, et al. Role of DAT-SPECT in the diagnostic work up of parkinsonism. *Mov Disord* 2007; **22**: 1229–1238.
  211. Benamer HTS, Patterson J, Grosset DG. Accurate differentiation of parkinsonism and essential tremor using visual assessment of [123I]FP-CIT SPECT imaging: the [123I]FP-CIT SPECT study group. *Mov Disord* 2000; **15**: 503–510.
  212. Vlaar AM, de Nijs T, Kessel AG, et al. Diagnostic value of 123I-ioflupane and 123I-iodobenzamide SPECT scans in 248 patients with parkinsonian syndromes. *Eur Neurol* 2008; **59**: 258–266.
  213. Scherfler C, Seppi K, Donnemiller E, et al. Voxel-wise analysis of [123I]-CIT SPECT differentiates the Parkinson variant of multiple system atrophy from idiopathic Parkinson's disease. *Brain* 2005; **128**: 1605–1612.
  214. Tinazzi M, Antonini A, Bovi T, et al. Clinical and <sup>123</sup>I FP-CIT SPET imaging follow-up in patients with drug-induced parkinsonism. *J Neurol* 2009; **256**: 910–915.
  215. Eckert T, Tang C, Eidelberg D. Assessment of the progression of Parkinson's disease: a metabolic network approach. *Lancet Neurol* 2007; **6**: 926–932.
  216. Chang CC, Liu JS, Chang YY, Chang WN, Chen SS, Lee CH. (99m)Tc-ethyl cysteinate dimer brain SPECT findings in early stage of dementia with Lewy bodies and Parkinson's disease patients: a correlation with neuropsychological tests. *Eur J Neurol* 2008; **15**: 61–65.
  217. Feigin A, Antonini A, Fukuda M, et al. Tc-99m ethylene cysteinate dimer SPECT in the differential diagnosis of parkinsonism. *Mov Disord* 2002; **17**: 1265–1270.
  218. Courbon F, Brefel-Courbon C, Thalamas C, et al. Cardiac MIBG scintigraphy is a sensitive tool for detecting cardiac sympathetic denervation in Parkinson's disease. *Mov Disord* 2003; **18**: 890–897.
  219. Nagayama H, Hamamoto M, Ueda M, Nagashima J, Katayama Y. Reliability of MIBG myocardial scintigraphy in the diagnosis of Parkinson's disease. *J Neurol Neurosurg Psychiatry* 2005; **76**: 249–251.
  220. Spiegel J, Möllers MO, Jost WH, et al. FP-CIT and MIBG scintigraphy in early Parkinson's disease. *Mov Disord* 2005; **20**: 552–561.
  221. Brooks DJ. Technology insight: imaging neurodegeneration in Parkinson's disease. *Nat Clin Pract Neurol* 2008; **4**: 267–277.
  222. Dhawan V, Ma Y, Pillai V, et al. Comparative analysis of striatal FDOPA uptake in Parkinson's disease: ratio method versus graphical approach. *J Nucl Med* 2002; **43**: 1324–1330.
  223. Bohnen NI, Albin RL, Koeppe RA, et al. Positron emission tomography of monoaminergic vesicular binding in aging and Parkinson disease. *J Cereb Blood Flow Metab* 2006; **26**: 1198–1212.
  224. Okamura N, Villemagne V, Drago J, et al. In vivo measurement of vesicular monoamine transporter type 2 density in Parkinson disease with (18)F-AV-133. *J Nucl Med* 2010; **51**: 223–228.
  225. Lee CS, Samii A, Sossi V, et al. In vivo positron emission tomographic evidence for compensatory changes in presynaptic dopaminergic nerve terminals in Parkinson's disease. *Ann Neurol* 2000; **47**: 493–503.
  226. Nurmi E, Bergman J, Eskola O, et al. Progression of dopaminergic hypofunction in striatal subregions in Parkinson's disease using [18F]CFT PET. *Synapse* 2003; **48**: 109–115.
  227. Guttman M, Burkholder J, Kish SJ, et al. [11C]RTI-32 PET studies of the dopamine transporter in early dopa-naive Parkinson's disease: implications for the symptomatic threshold. *Neurology* 1997; **48**: 1578–1583.
  228. Ishikawa T, Dhawan V, Kazumata K, et al. Comparative nigrostriatal dopaminergic imaging with iodine-123 beta-CIT-FP/SPECT and Fluorine-18 FDOPA/PET. *J Nucl Med* 1996; **37**: 1760–1765.
  229. Vingerhoets FJG, Schulzer M, Calne DB, Snow BJ. Which clinical sign of Parkinson's disease best reflects the nigrostriatal lesion? *Ann Neurol* 1997; **41**: 58–64.
  230. Whone AL, Watts RL, Stoessl J, et al. Slower progression of PD with ropinirol versus L-dopa: the REAL-PET study. *Ann Neurol* 2003; **54**: 93–101.
  231. Bruck A, Aalto S, Rauhala E, Bergman J, Marttila R, Rinne JO. A follow-up study on 6-[18F]fluoro-L-dopa uptake in early Parkinson's disease shows nonlinear progression in the putamen. *Mov Disord* 2009; **24**: 1009–1015.
  232. Adams JR, van Netten H, Schulzer M, et al. PET in LRRK2 mutations: comparison to sporadic Parkinson's disease and evidence for presymptomatic compensation. *Brain* 2005; **128**: 2777–2785.
  233. Piccini P, Morrish PK, Turjanski N, et al. Dopaminergic function in familial Parkinson's disease: a clinical and 18F-dopa PET study. *Ann Neurol* 1997; **41**: 222–229.
  234. Piccini P, Burn DJ, Ceravalo R, Maraganore DM, Brooks DJ. The role of inheritance in sporadic Parkinson's disease: evidence from a longitudinal study of dopaminergic function in twins. *Ann Neurol* 1999; **45**: 577–582.
  235. Brooks DJ, Ibañez V, Sawle GV, et al. Differing patterns of striatal 18F-dopa uptake in Parkinson's disease, multiple system atrophy and progressive supranuclear palsy. *Ann Neurol* 1990; **28**: 547–555.
  236. Antonini A, Schwarz J, Oertel WH, Beer HF, Madeja UD, Leenders KL. [11C]raclopride and positron emission tomography in previously untreated patients with Parkinson's disease: influence of L-dopa and lisuride therapy on striatal dopamine D2-receptors. *Neurology* 1994; **44**: 1325–1329.

237. Antonini A, Leenders KL, Vontobel P, *et al.* Complementary PET studies of striatal neuronal function in the differential diagnosis between multiple system atrophy and Parkinson's disease. *Brain* 1997; **120**: 2187–2195.
238. Brooks DJ, Ibanez V, Sawle GV, *et al.* Striatal D2 receptor status in Parkinson's disease, striatonigral degeneration, and progressive supranuclear palsy, measured with 11C-raclopride and PET. *Ann Neurol* 1992; **31**: 184–192.
239. Eidelberg D, Moeller JR, Dhawan V, *et al.* The metabolic anatomy of Parkinson's disease: complementary [18F]fluorodeoxyglucose and [18F]fluorodopa positron emission tomographic studies. *Mov Disord* 1990; **5**: 203–213.
240. Feigin A, Fukuda M, Dhawan V, *et al.* Metabolic correlates of levodopa response in Parkinson's disease. *Neurology* 2001; **57**: 2083–2088.
241. Eidelberg D, Takikawa S, Moeller JR, *et al.* Striatal hypometabolism distinguishes striatonigral degeneration from Parkinson's disease. *Ann Neurol* 1993; **33**: 518–527.
242. Eckert T, Tang C, Ma Y, *et al.* Abnormal metabolic networks in atypical parkinsonism. *Mov Disord* 2008; **23**: 727–733.
243. Antonini A, Berto P, Lopatriello S, Tamma F, Annemans L, Chambers M. Cost-effectiveness of 123I-FP-CIT SPECT in the differential diagnosis of essential tremor and Parkinson's disease in Italy. *Mov Disord* 2008; **23**: 2202–2209.
244. Van Laere K, Everaert L, Annemans L, Gonce M, Vandenberghe W, Vander Borght T. The cost effectiveness of 123I-FP-CIT SPECT imaging in patients with an uncertain clinical diagnosis of parkinsonism. *Eur J Nucl Med Mol Imaging* 2008; **35**: 1367–1376.
245. Dodel RC, Höfken H, Möller JC, *et al.* Dopamine transporter imaging and SPECT in diagnostic work-up of Parkinson's disease: a decision-analytic approach. *Mov Disord* 2003; **18**(Suppl. 7): S52–S62.